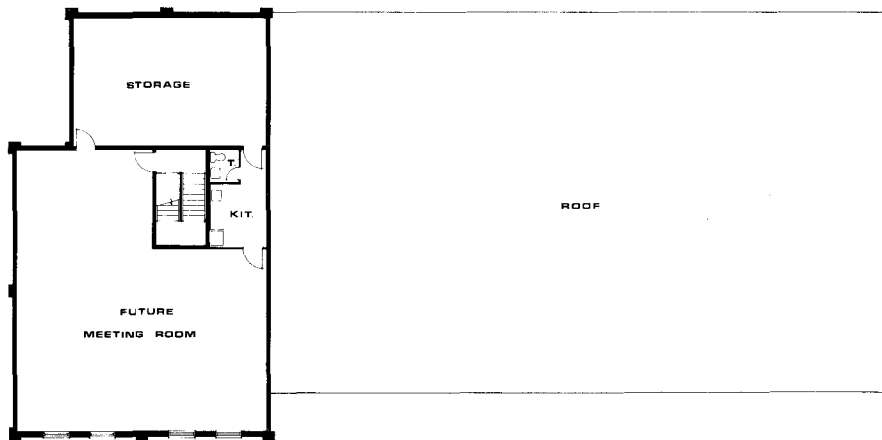
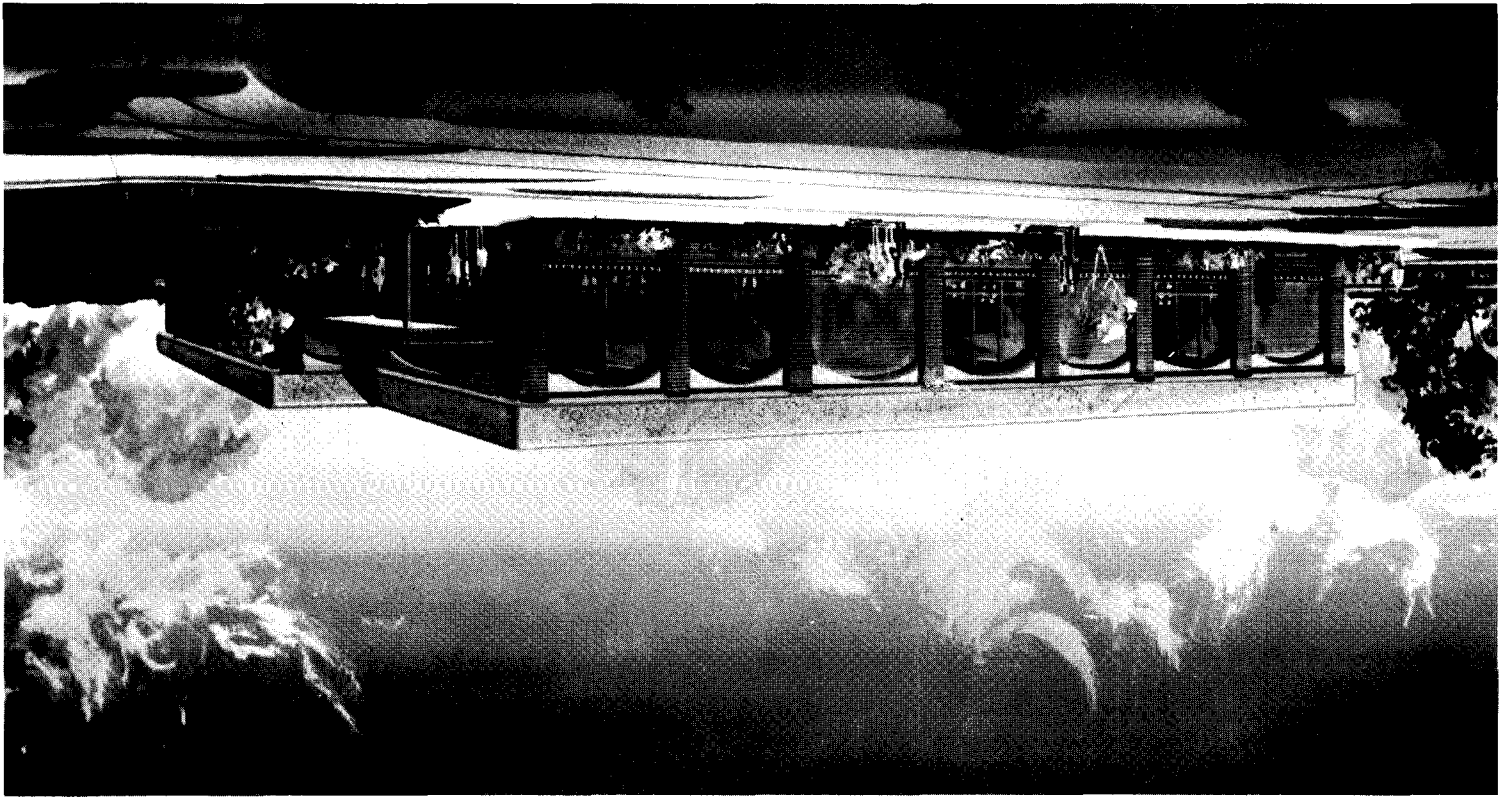


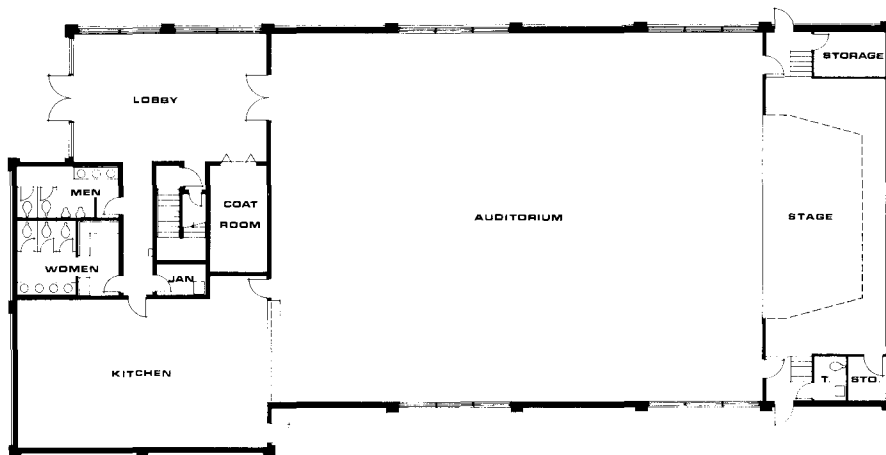
**SAINT LEON ARMENIAN CHURCH
COMMUNITY CENTER
Fair Lawn, New Jersey**

1. Total Floor Area Approximately 8400 square feet.
2. Auditorium 78 feet x 58 feet — 4524 square feet.
Seating Capacity 300 +
3. Lobby 30½ feet x 20 feet — 610 square feet.
4. Kitchen 39½ feet x 23½ feet — 928 square feet.
5. Stage 32 feet x 18½ feet.
6. Partial 2nd floor for future use, approximately 2400 square feet.
7. Men's and Women's Toilet Rooms.
8. Toilet Facility for the Handicapped.
9. Janitors Maintenance Room.
10. All Masonry Construction.
11. Brick Facing on Major Elevations.
12. Brick Pilaster / Stucco Arch Exterior.
13. Slab on Grade Construction for Ground Floor.
14. No Interior Columns.
15. Landscaped Patio Between Church and Community Center.
16. Fully Glazed Inviting Lobby with high ceiling.
17. 18 foot clear height Auditorium.
18. 16 foot Kitchen Service Counter with roll UP door.
19. 32 foot wide stage with dressing area and storage.
20. Coat Room accommodates 325 coats.
21. Entire Center to be air-conditioned with proper filtration and humidification of air.

ST. LEON COMMUNITY CENTER, FAIR LAWN, N.J.



UPPER LEVEL



MAIN LEVEL