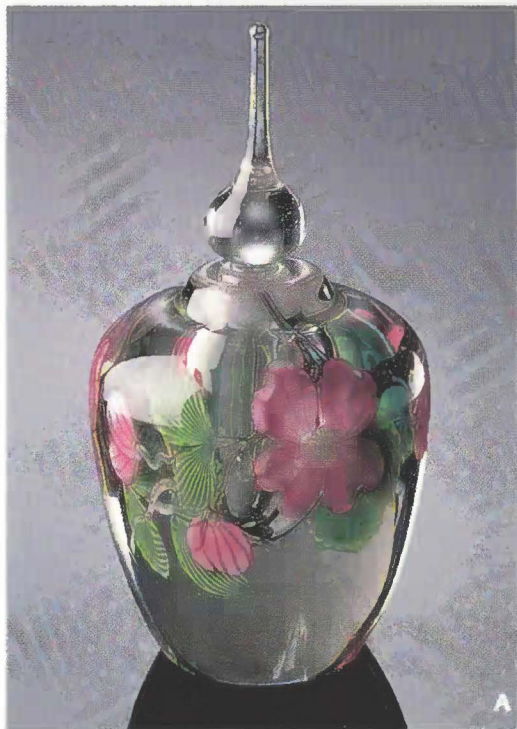


The Smithsonian Catalogue  
Spring 1987



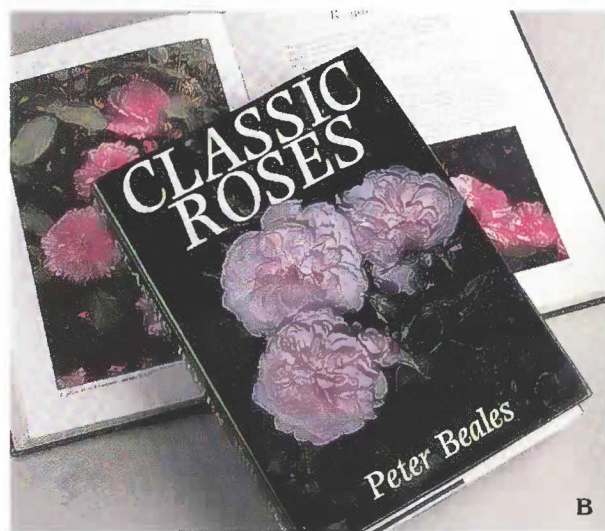


## Smithsonian Catalogue Spring 1987



**A. FLOWERING DOGWOOD PERFUME BOTTLE.** Delicately sculpted petals, encased in crystal, beckon with lifelike beauty and grace. Our exclusive handmade perfume bottle with ground stopper is created by Orient & Flume Studios of California. Our National Museum of American History includes Orient & Flume glass in its collections. Signed and dated. Approx. 5" h. 7172 \$225.00 (Members \$202.50) (s/h 2.80).

**B. CLASSIC ROSES.** Lavishly, in 540 color photos, Peter Beales identifies and describes every rose from the legendary Damask of the Babylonian gardens to the humble, hardy Rugosa hedge rose and offers advice on how to grow your favorite varieties. Hardback. 432 pgs. 1152 \$45.00 (Members \$40.50) (s/h 3.40).

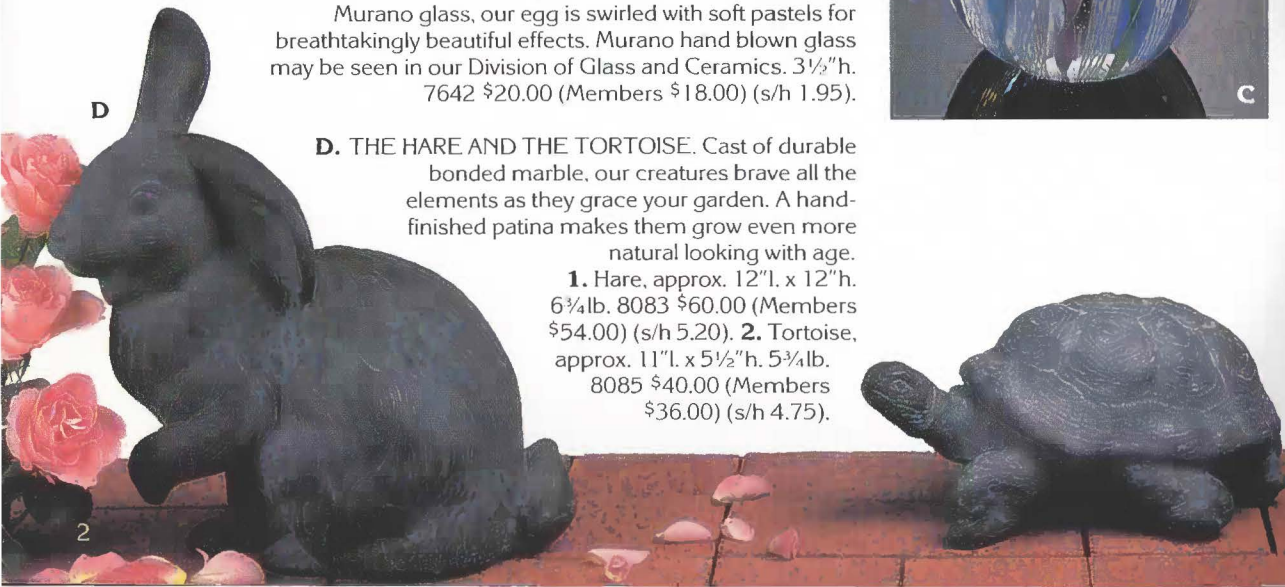


**C. GLASS EGG PAPERWEIGHT.** Masterfully blown of Murano glass, our egg is swirled with soft pastels for breathtakingly beautiful effects. Murano hand blown glass may be seen in our Division of Glass and Ceramics. 3 1/2" h. 7642 \$20.00 (Members \$18.00) (s/h 1.95).



**D. THE HARE AND THE TORTOISE.** Cast of durable bonded marble, our creatures brave all the elements as they grace your garden. A hand-finished patina makes them grow even more natural looking with age.

**1.** Hare, approx. 12" l. x 12" h. 6 3/4 lb. 8083 \$60.00 (Members \$54.00) (s/h 5.20). **2.** Tortoise, approx. 11" l. x 5 1/2" h. 5 3/4 lb. 8085 \$40.00 (Members \$36.00) (s/h 4.75).



**E. ROSE QUARTZ CLOISSONNÉ NECKLACE AND EARRINGS.** The soft pink hue of rose quartz, set off by the beauty of cloisonné beads, makes our necklace especially elegant. Approx. 29" l. **1.** Necklace: 4589 \$150.00 (Members \$135.00) (s/h 2.60). **2.** Matching Earrings: For pierced ears. 4252 \$18.00 (Members \$16.20) (s/h 1.80). **3.** Set: 4574 \$168.00 (Members \$151.20) (s/h 3.10).

**F. WEEYOE PILLOWS.** "Weeyoe" means beautiful in the Senecan language. These traditional designs are adapted from American Indian artifacts in the collections of our National Museum of Natural History. Cotton duck. Made in U.S.A. Graduated sizes: 18", 15" and 13" sq. Set of 3. 2900 \$45.00 (Members \$40.50) (s/h 3.50).\*

**G. OUR WILLOW FURNITURE,** a natural for your sun room or covered porch, is made of creek willow, which is collected, cut and hand formed by craftsmen Clarence and Bobbie Jean McKiddy of Kentucky. Recommend protection from rain and snow. Allow 12 weeks for delivery. **1.** Chair, approx. 42" h. x 24" w.: 3016 \$220.00 (Members \$198.00) (s/h 35.00).\* **2.** Love seat, approx. 42" h. x 54" w. 3015 \$325.00 (Members \$292.50) (s/h 45.00).\* **3.** Table, 24" h. x 16" w.: 3017 \$95.00 (Members \$85.50) (s/h 35.00, 5.00 when shipped with chair or love seat).\*



**CREDIT CARD  
ORDERS PHONE  
703-455-1700**





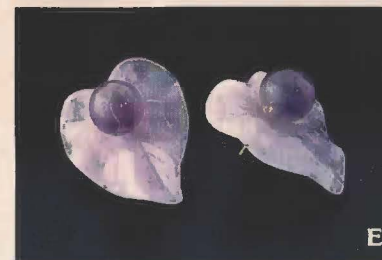
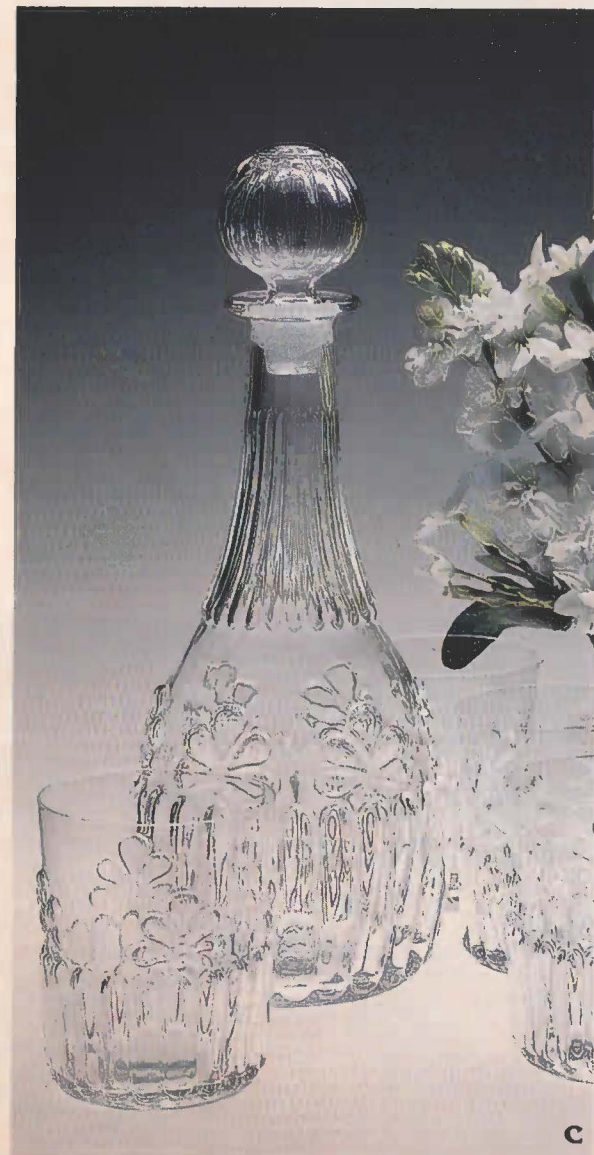


**A. BRIDE DOLL NOTE CARD.** Inspired by a late 19th-century paper doll in our Cooper-Hewitt Museum, the die-cut card presents both front and back views of an elegantly-gowned bride. 15 cards and envelopes (no greeting). 5306 \$7.50 (Members \$6.75) (s/h 1.70).

**B. ROSE CANDLEHOLDERS.** Our pair of pretty porcelain candleholders is delicately shaped by hand, then hand painted to recreate life-like roses and leaves. They are from Capodimonte, Italy. Approx. 3" h. Pair: 7814 \$30.00 (Members \$27.00) (s/h 3.10).

**C. PALMETTE GLASSWARE.** A Smithsonian exclusive, this intricately detailed pattern of raised palmettes and deeply molded ribs is adapted from an early 19th-century creamer in our National Museum of American History. **1.** Decanter, 32 oz. 7108 \$30.00 (Members \$27.00) (s/h 2.55). **2.** Set of 4 8-oz. glasses. 7125 \$12.50 (Members \$11.25) (s/h 2.45). **3.** Set of 4 12-oz. tumblers (Not shown). 7117 \$15.00 (Members \$13.50) (s/h 2.50).

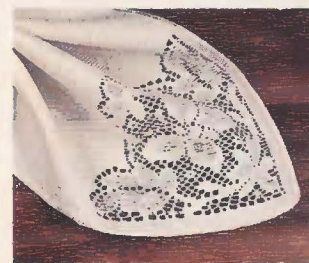
**D. EIGHTEENTH-CENTURY WINE COASTER.** George Washington owned the original of this silver-plated wine coaster reproduced for us by the Kirk Stieff Company. A beautiful reminder of our heritage, this coaster is as useful today as it was in the 1700s. 7000 \$29.95 (Members \$26.95) (s/h 1.95).



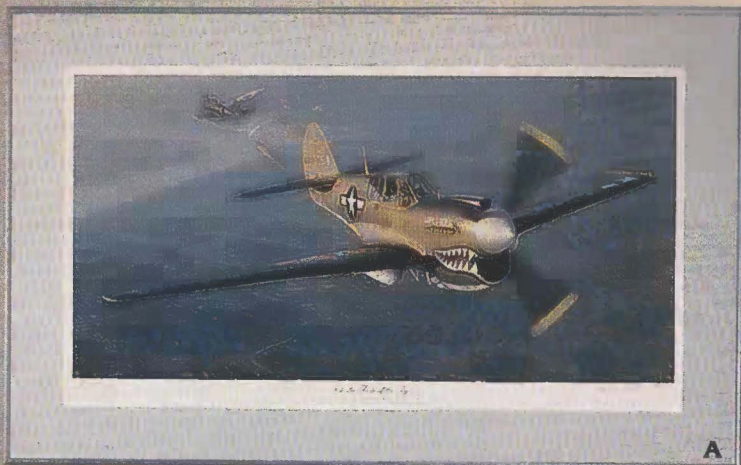
**E. AMETHYST LEAF EARRINGS** feature a 6mm amethyst bead on a removable carved leaf jacket. Leaf 7/8" l. For pierced ears. 4253 \$20.00 (Members \$18.00) (s/h 1.80).

**F. BLUE LACE AGATE AND PEARL NECKLACE.** Fresh water pearls and amethysts highlight our necklace of 6mm blue lace agate beads and 14k roundels and clasp. These minerals are representative of those found in our Gem and Mineral Hall. 32" l. 4513 \$185.00 (Members \$166.50) (s/h 3.10).

**G. BUTTERFLY LACE TABLECLOTH, PLACEMATS, AND NAPKINS.** Reproduced from a Belgian appliqué lace tablecloth in our textile collection. Made of washable 80% cotton/20% Dacron® polyester, by Quaker Lace, just for us. Available as a tablecloth in four sizes, or as a set of four striking placemats. Matching napkins feature the butterfly motif on one corner. Ecrú. **1.** 70" round: 2347 \$36.00 (Members \$32.40) (s/h 2.50). **2.** 52" x 70" oblong: 2344 \$30.00 (Members \$27.00) (s/h 2.40). **3.** 64" x 84" oblong: 2345 \$36.00 (Members \$32.40) (s/h 2.60). **4.** 64" x 102" oblong: 2346 \$56.00 (Members \$50.40) (s/h 2.75). **5.** Set of four placemats, each 13" x 19": 2343 \$21.00 (Members \$18.90) (s/h 2.00). **6.** Set of four matching napkins, each 17" square: 2342 \$16.00 (Members \$14.40) (s/h 1.75).

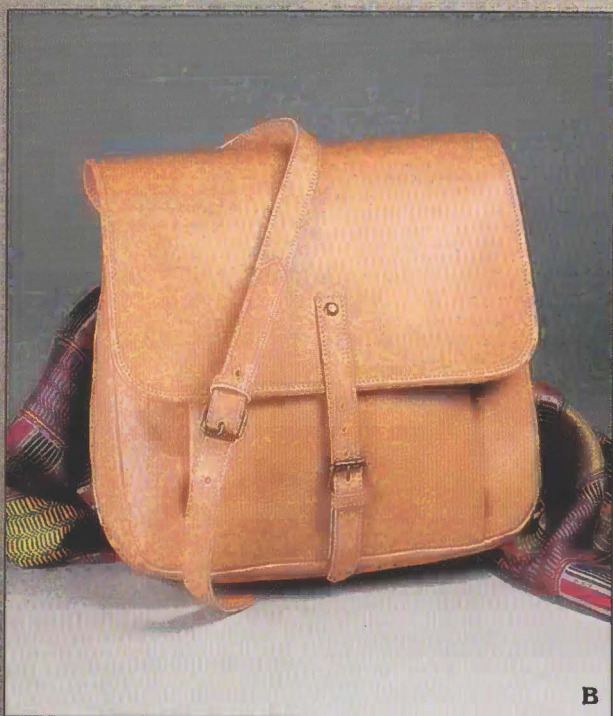






A

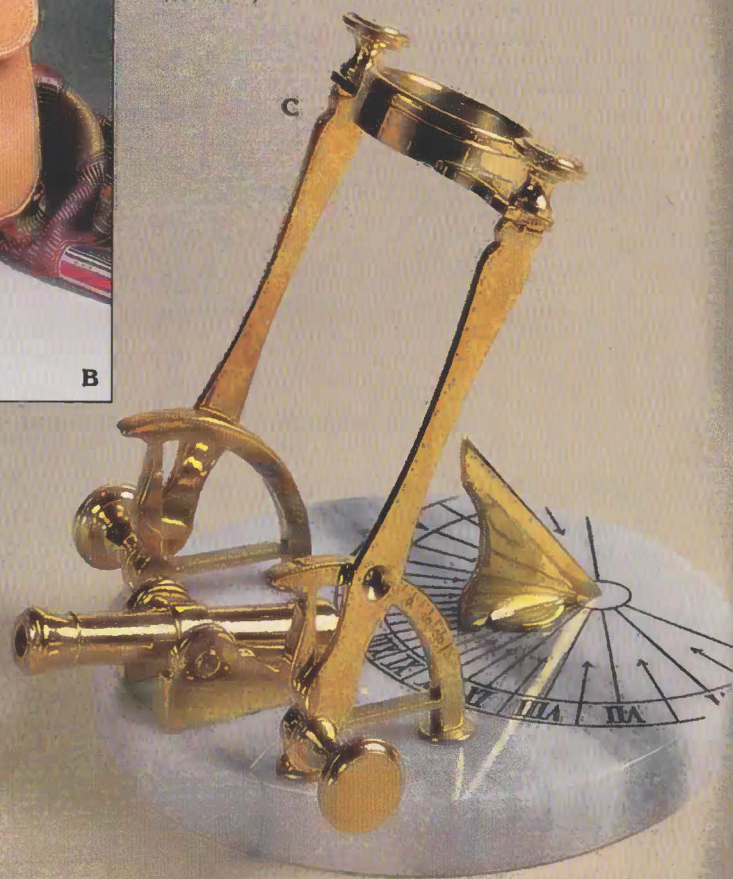
**A. "INTO THE TEETH OF THE TIGER"** evokes the drama of the P-40. Limited edition print of 1,000 signed and numbered by the artist, William S. Phillips, and countersigned by the pilot, Don Lopez. Matted under acrylic in pewter-finish metal frame. 20" x 32". 5537 \$175.00 (Members \$157.50) (s/h 7.25).\*



B

**B. LETTER CARRIER PURSE.** Styled after 19th-century mail pouches, our exclusive adaptation is made of sturdy top-stitched Italian leather with zippered pocket inside and attractive antiqued brass fittings. Our National Museum of American History includes a Division of Postal History. 12"w. x 11"h. x 3" deep. Adjustable shoulder strap. 2220 \$95.00 (Members \$85.50) (s/h 2.35).

**C. NOON GUN SUNDIAL** is an adaptation of one used in Versailles in the early 18th century to announce the noon hour. At that moment the sun's strongest rays, concentrated by a magnifying glass, set off a loaded cannon. Our solid brass and marble model does not emit timely explosions, but it is a handsome accent to your desk or library. Approx. 6" dia. x 6"h. 8101 \$95.00 (Members \$85.50) (s/h 2.75).



C



D

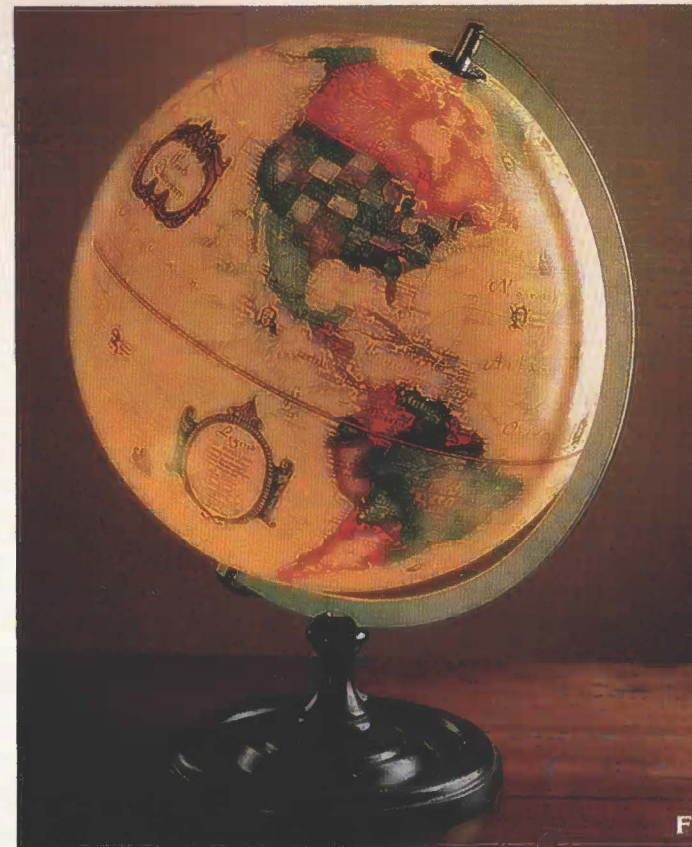
**D. DECATUR RING.** Our exclusive reproduction of the 1804 original is made of 14k gold with inset bands of black enamel. A stunning wedding band or friendship ring. Size 5: 4412. Size 6:

4416. Size 7: 4419. Size 8: 4420. Size 9: 4421. Size 10: 4422. Size 11: 4423. Size 12: 4424. \$165.00 (Members \$148.50) (s/h 2.60).



E

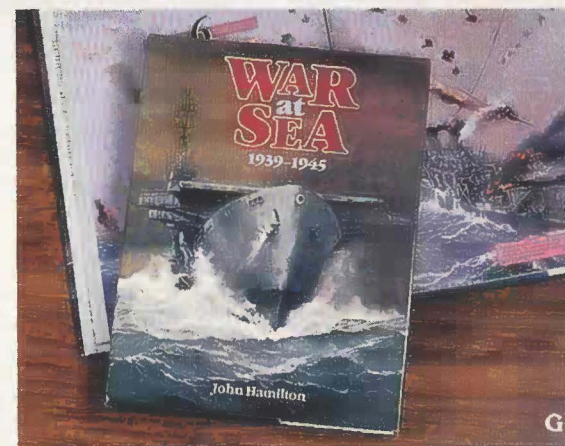
**E. SILK TIE.** Richly hand woven of pure silk twill, our tie takes its distinguished design from tile patterns in the rotunda of the Smithsonian's Arts and Industries Building. A Smithsonian exclusive imported from Italy. Tan and burgundy on navy. 2004 \$22.00 (Members \$19.80) (s/h 1.95).



F

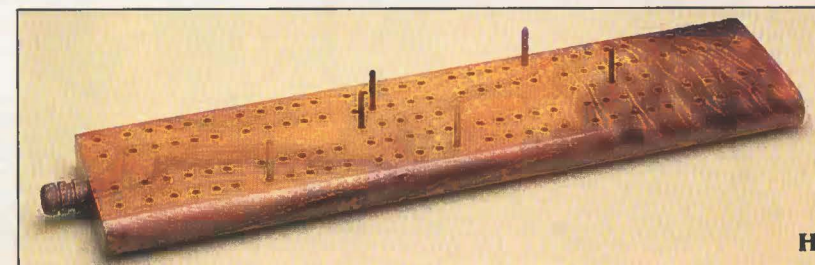
**F. WORLD GLOBE.** Turn the light on and see full sharp maps with political borders and ocean floors. Turn the light off and see a physical map of the world. Executed in "old map style" with antique finish, our up-to-date globe notes dates of such important voyagers as Columbus, Magellan and others. 12" illuminated globe on polished wood base. 6007 \$60.00 (Members \$54.00) (s/h 3.65).\*

**G. WAR AT SEA, 1939-1945.** John Hamilton includes 176 of his magnificent paintings in this dramatic depiction of the Second World War. D-Day landings, convoys to Russia, assaults in the Pacific—all here with fast-paced text accompanying awe-inspiring artwork. Hardback. 272 pgs. 43 maps. 1157 \$49.95 (Members \$44.95) (s/h 3.50).



G

**H. KOA WOOD CRIBBAGE BOARD.** Keep score beautifully on this glossy, hardwood board handcrafted in Hawaii by American artisan Craig Powell. Found only in Hawaii, the wood is Acacia Koa, sought for its rarity and richness of grain. Approx. 12"l. with scoring pegs. 6710 \$40.00. (Members \$36.00) (s/h 2.35).



H





B

**A. GALLOPING HORSE OF KANSU** is one of the most famous images in Asian history and art. Our noble horse is produced in brass with an antiqued bronze finish. 7" h. x 7" l. with wooden stand. 8066 \$37.00 (Members \$33.00) (s/h 2.60).

**B. PAINTED PORCELAIN NECKLACE.** These dramatic black beads are hand painted, accented with gold, and then hand knotted on silk. Chinese porcelain decorative arts are in the National Museum of Natural History. Approx. 24" l. 4803 \$35.00 (Members \$31.50) (s/h 1.90).

**C. PORCELAIN PLATES.** Designed exclusively for the Smithsonian, these enchanting plates are painted by hand with a delicate display of flowers, fruit, birds, and butterflies. The richly detailed pattern on our set of four plates is adapted from a *famille rose* service in our collection. 9" dia. Set of four. 7313 \$32.00 (Members \$28.80) (s/h 3.40).

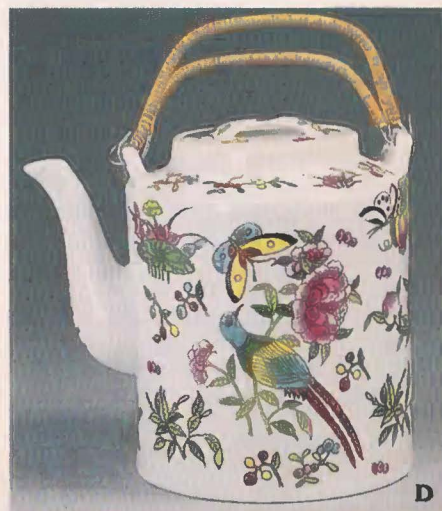
**D. PORCELAIN TEAPOT.** Adapted from a *famille rose* service in the National Museum of Natural History, our exclusive teapot measures 6½" h. (excl. handle) and holds ten cups. 7378 \$28.00 (Members \$25.20) (s/h 2.45).



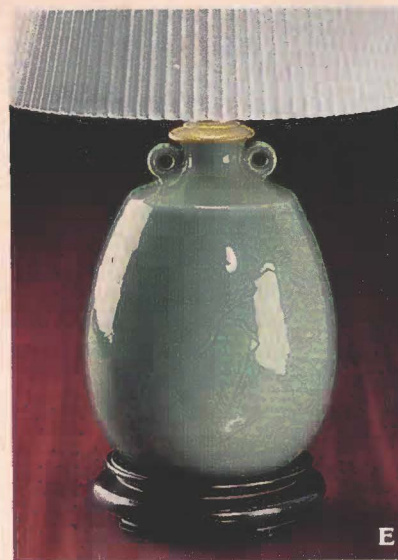
A



C



D



E



F

**E. CELADON LAMP** is a striking contemporary example of ancient Chinese celadonware. This attractive lamp is fitted with brass hardware, set on a rosewood base, and topped with a parchment pleated shade and a brass Oriental finial. 19" h. overall. 3646 \$75.00 (Members \$67.50) (s/h 4.75)\*

**F. VICTORIAN GARNET AND PEARL EARRINGS** are a wonderful complement to our breathtaking Victorian engagement ring. Designed exclusively for the Smithsonian, faceted garnets surrounded by tiny natural seed pearls create exquisite earrings. ¾". 14k gold settings and posts. Handmade in U.S.A. 4224 \$275.00 (Members \$247.50) (s/h 2.80).

**G. CHINESE FLORAL SCARF.** A delicate profusion of peonies, symbolic of feminine beauty, is silkscreened onto our luxurious scarf of imported silk satin. The graceful pattern is reproduced from a 19th-century Chinese embroidered shawl in our National Museum of Natural History. 32" sq. 2128 \$32.00 (Members \$28.80) (s/h 1.95).

**H. JADE HEART PENDANT.** Made from natural nephrite jade, this 1" heart-shaped gemstone hangs from a 16" chain of 14k gold. 4570 \$44.00 (Members \$39.60) (s/h 1.80).

**CREDIT CARD  
ORDERS PHONE  
703-455-1700**



G



H





**A. BRASS AND HORN BRACELETS.** Women all over India have worn and cherished bangle bracelets since 2500 B.C. The bright dash of brass set next to glistening black horn makes these traditional bracelets come alive with style! Set of three: 4612 \$18.00 (Members \$16.20) (s/h 1.90).



**B. SET OF IMARI SERVING BOWLS,** lavishly decorated in the 200-year-old tradition of Japanese Imari porcelain. Creates a distinctive display or enhances any table decor. Three sizes: 5 1/4" dia., 6 1/2" dia., 7 3/4" dia. Set of three: 7342 \$28.00 (Members \$25.20) (s/h 3.25).



**C. ORIENTAL GEMSTONE TREE.** Our graceful miniature tree sparkles with stones of jade, rose quartz, and carnelian — cut and polished by hand in the traditional Chinese manner. Branches, leaves, and blossoms are flexible so you can gently rearrange them. Approx. 5 1/2" h. Set in a jade base. 8049 \$45.00 (Members \$40.50) (s/h 1.95).

**D. JADE DRAGON** evokes ancient mysteries of the Orient, with beauty, intellect, and purity often attributed to jade. Our intricately carved dragon is representative of the many jade carvings in our National Museum of Natural History. 7 1/2" l. x 4" h. including rosewood base. 8056 \$200.00 (Members \$180.00) (s/h 2.60).



CREDIT CARD  
ORDERS PHONE  
703-455-1700



**E. GREEN JADE NECKLACE.** Made from natural nephrite jade, the 8mm beads on this necklace are strung and individually knotted by hand. Classic yet contemporary. Approx. 25" l. 4508 \$95.00 (Members \$85.50) (s/h 2.10).

**F. JADE BEAD EARRINGS.** Jade is well represented in the Smithsonian. 6mm beads on 14k gold posts. For pierced ears. 4201 \$25.00 (Members \$22.50) (s/h 1.80).

**G. UMBRELLA STAND.** Spring showers bring flowers and... umbrellas! What more perfect place for them to drip dry than our splendid stand from Portugal. Glazed ceramic. 17 1/2" h. x 7 1/4" dia. 3900 \$144.00 (Members \$129.60) (s/h 5.20)\*.

**H. JAPANESE LACQUER TRAY.** The tranquil scene of goldfish swimming in a pond is taken from a Japanese lacquer tray in our National Museum of Natural History. Exclusive to the Smithsonian, our galleried tray measures 13 1/2" dia. 9959 \$25.00 (Members \$22.50) (s/h 2.95).







A



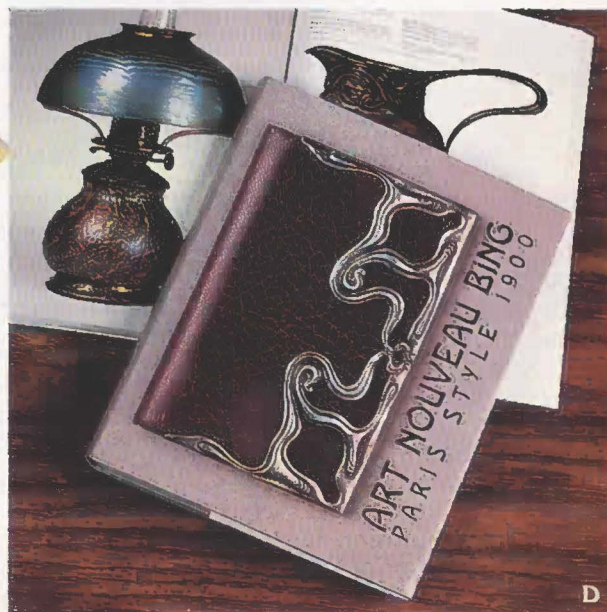
B

**A. MUSICAL TREASURE BOX.** A Smithsonian exclusive. Exquisite Italian marquetry, or inlay, featuring flowers encircled by a heart, opens to reveal a velvet-lined box, perfect for small treasures. And, with the lid open, you hear the enchanting strains of Tchaikovsky's "Swan Lake" in a fine Swiss 18-note movement. 5"l. x 5"w. x 2 1/4"h. 7926 \$48.00 (Members \$43.20) (s/h 2.35).

**B. WORKS OF W.A. MOZART.** Listen to such works as "Eine kleine Nachtmusik" and Quintet for Horn and Strings performed by acclaimed Smithsonian musicians on rare period instruments. Includes illustrated booklet on Mozart, his life, his music and his instruments. **1.** Set of 6 LP records: 1812. **2.** Set of 5 cassettes: 1813. Each \$49.95 (Members \$44.95) (s/h 2.89).

**C. LILY POND LAMP** in the Art Nouveau style features a lily leaf base cast in solid bronze. An art glass shade in the graceful "pulled feather" design, blown by Lundberg Studios, tops the distinctive piece. Each is signed and numbered. Approx. 11"h. with 6 1/2" dia. base. 3614 \$286.00 (Members \$257.40) (s/h 4.00)\*

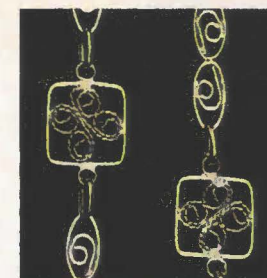
**D. ART NOUVEAU BING.** This book traces Siegfried Bing's vision and support of Art Nouveau's development through 350 illustrations, 81 in color. An exhibit, "Art Nouveau Bing," can be seen at our Cooper-Hewitt Museum in New York in July, 1987. 296 pgs. **1.** Hardback. 1101 \$40.00 (Members \$36.00) (s/h 3.10). **2.** Paperback. 1103 \$27.50 (Members \$24.75) (s/h 3.00).



D



F



E

**E. GOLD FILIGREE CHAIN** is a delicate display of intricate beauty yet simple grace. Our exclusive 14k gold chain is made of hand-fashioned filigree links, formed by fine wire to create intricate designs. Inspired by a necklace in the collections of our National Museum of American History. (Detail shown enlarged.) Approx. 27"l. 4529 \$250.00 (Members \$225.00) (s/h 4.10).

**F. ROSE AND LILY SCARF** takes its sumptuous look from a 19th-century printed design in our collections. The stylized floral and foliage pattern is typical of the period. Our large luxurious 100% silk scarf was printed by hand for us in India. Approx. 44"sq. **1.** Burgundy scarf: 2146. **2.** Black scarf: 2145. Each: \$32.00 (Members \$28.80) (s/h 1.95).

**G. CORREIA CABINET VASE.** Shimmering blues and golds echo the peacock iridescence of ancient glass that also inspired Louis Comfort Tiffany. Our exquisite vase is hand blown and signed by Correia, an art glass studio in California whose works are displayed in the Ceramics and Glass collections of our National Museum of American History. Approx. 4 1/2"h. 7374 \$80.00 (Members \$72.00) (s/h 2.45).

**H. FLOWERS AND VINES NEEDLEPOINT KIT** is adapted from a painting for a fabric print by Louis-Albert DuBois (1752-1818), whose textile designs are in our Cooper-Hewitt Museum. Our exclusive kit includes #14 imported Zweigart® canvas, 3-ply Persian wool, needles, and instructions to finish a 14" square canvas. 2515 \$37.50 (Members \$33.75) (s/h 1.95).



G



H

**CREDIT CARD  
ORDERS PHONE  
703-455-1700**

13



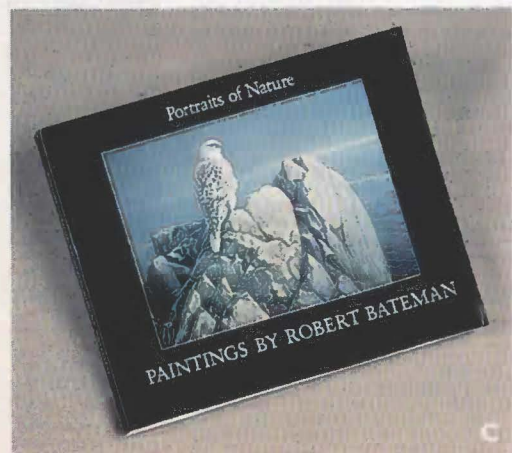


**A. NOH MASK.** Our hand-finished hinoki (Japanese Cypress) wood mask of Okame, the Japanese Goddess of Mirth, makes a delightful wall ornament. Our National Museum of Natural History includes similar Noh Theater Japanese masks. 7" w. x 9" h. 8098 \$45.00 (Members \$40.50) (s/h 2.10).

**B. AFRICAN DESIGN SCARF.** Craftsmanship and creativity combine in this dramatic silk scarf inspired by a masterpiece of West African weaving in our National Museum of African Art. A Smithsonian exclusive, our self-fringed scarf, made in Italy of 100% silk twill, can be worn as a scarf or sash. Approx. 18" x 62". 2153 \$30.00 (Members \$27.00) (s/h 1.95).

**C. PORTRAITS OF NATURE: PAINTINGS BY ROBERT BATEMAN.** Take a trip through Nature via the magical brushwork of this renowned nature artist. Over 70 paintings, 32 in color, some published here for the very first time. Interpretive text by Stanwyn Shetler of the National Museum of Natural History. Paperback. 160 pgs. 1165 \$17.50 (Members \$14.00) (s/h 2.50).

**D. LITTLE GREY RABBIT** is flawlessly sculpted and hand decorated by skilled New England craftsmen. This lifelike stoneware piece takes its realistic colors from Nature's own along the craggy coast of Maine. Approx. 3" h. x 5 1/2" l. 8004 \$18.00 (Members \$16.20) (s/h 2.00).



**E. STERLING SILVER AND GARNET RING.** A Smithsonian exclusive. Our garnet ring is designed and made by hand in Jaipur, India, in a sterling silver setting that cleverly adjusts to any ring size. 4425 \$42.00 (Members \$37.80) (s/h 1.90).

**F. ASSORTED AGATE NECKLACE.** Representative of the Smithsonian's extensive Gem and Mineral Hall in our National Museum of Natural History, these natural stones vary in color and delicate veining and are strung by hand so that no two are alike. Approx. 30" l. 4515 \$20.00 (Members \$18.00) (s/h 1.95).



**G. BIG BAND JAZZ: From the Beginnings to the Fifties.** Winner of two Grammys, our set includes 80 selections by 31 bands and 48-page booklet. **1.** Set of six LP records: 1835. **2.** Set of three Dolby cassettes: 1836. Each \$41.96 (Members \$39.96) (s/h 2.89).

**H. AVENTURINE DESK SET.** Letter opener and magnifying glass glow with the intense green color of aventurine, also known as "Indian Jade." Handsomely etched brass fittings and blade make these the perfect partners for any desk. Includes colorful brocade holder. Letter opener, 5 5/8" l. Magnifying glass, 5 1/2" l. The set: 7993 \$35.00 (Members \$31.50) (s/h 2.05).











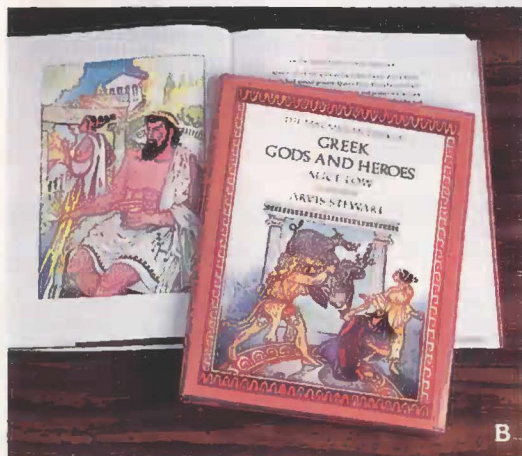




**A. CLASSIC BRASS LAMP** is beautifully adapted by Baldwin Brass in Reading, Pa., from a pair of candlesticks in our National Museum of American History. Designed in the neoclassical style inspired by ancient Greece and Rome, our handsome treated brass lamp adds an elegant and tasteful accent to enhance any room. (UL approved. 27" h. incl. natural fabric shade, 4 3/4" sq. base. 3640 \$250.00 (Members \$225.00) (s/h 6.25).\*

**B. GREEK GODS AND HEROES.** Children can't wait for a bedtime story from this exciting collection. Read aloud how Zeus and other gods ruled the universe; how mortal hero Perseus slew the mighty Medusa. Classic tales, entertainingly rewritten by Alice Low and beautifully illustrated by Arvis Stewart. Hardback. 184 pgs. Over 100 illus., 64 in color. 1511 \$15.95 (Members \$14.35) (s/h 3.10).

**C. BY JOVE.** Experience the fascinating world of classical mythology. Travel as Mere Mortals under the protection of legendary Heroes, try to collect gold coins, escape from the Labyrinth, face threatening Perils, and accompany Jason on the Quest of the Golden Fleece. Includes illustrated 59-page *By Jove Stories* retelling many classical myths and enhancing the educational value of this intriguing game. For 2 to 6 players, ages 10 and older. 6293 \$20.00 (Members \$18.00) (s/h 2.60).



B

**CREDIT CARD  
ORDERS PHONE  
703-455-1700**



C



D

**D. NARCISSUS PAPERWEIGHT** reflects the beauty of the fragile, fragrant flower. Created exclusively for us by American glass artist Steven Lundberg of Lundberg Studios. Signed and numbered. A limited edition of 250. Approx. 3" dia. 7625 \$210.00 (Members \$189.00) (s/h 2.10).

**E. ETRUSCAN CHARIOTEER.** Cast in bronze, our gallant Athena is much like other ancient Etruscan artifacts found in the collections of the National Museum of Natural History. Approx. 7 3/8" h. x 6 1/4" l. 8000 \$35.00 (Members \$31.50) (s/h 2.45).

**F. AMETHYST NECKLACE.** Amethyst is associated with the planet Jupiter and is said to bring good luck. Its color ranges from pale violet to deep purple. 10mm beads. Hand knotted. 18" l. 4597 \$135.00 (Members \$121.50) (s/h 2.60).

**G. AMETHYST AND CARVED CRYSTAL EAR-RINGS.** Dramatic drop earrings clearly sparkle, pairing carved crystal beads with beautiful amethysts. 14k gold bead and post. For pierced ears. Approx. 1 1/4" l. 4207 \$44.00 (Members \$39.60) (s/h 1.80).



E



F

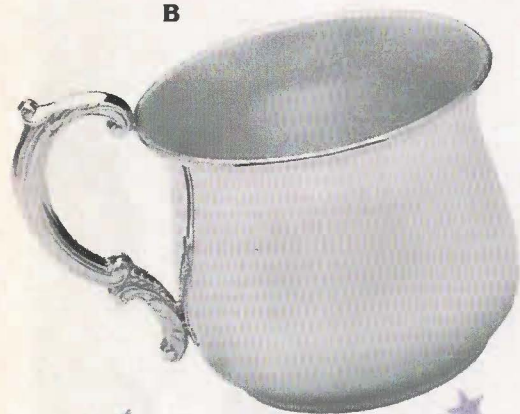


G





B



A

**A. LACE HANDKERCHIEF BONNET** starts a tradition for the newborn boy or girl. Lace-edged square of pure Swiss batiste cotton folds in half, ties with satin ribbons into a baby bonnet. When the baby grows up and gets married, this same bonnet serves as a handkerchief for the bride. Approx. 12" x 12". 2938 \$20.00 (Members \$18.00) (s/h 1.80).

**B. STERLING SILVER BABY CUP AND RATTLE.** High-styled cup and easy-grasp barbell rattle continue a tradition that started at the turn of the century. Giving silver to newborns is even more popular today. Made in U.S.A. **1.** Baby Cup, 2 1/8" h. 7040 \$85.00 (Members \$76.50) (s/h 1.85). **2.** Rattle, 3 1/4" l. 7041 \$45.00 (Members \$40.50) (s/h 1.85).

**C. CHILD'S WICKER ROCKER.** Children should be seen in this Victorian-style wicker chair, faithfully crafted to reflect 1900's design at its best. Similar wicker furniture is in the Ice Cream Parlor and Domestic Life collections in the National Museum of American History. 21" h. x 20" w. with 21" rockers. 3020 \$40.00 (Members \$36.00) (s/h 3.40).\*

**D. WHEN YOU WERE YOUNG: A MEMORY BOOK.** What better gift for new parents than this exquisitely-illustrated journal of their child's first two years, with spaces for photographs and announcements. 64 pgs. 5715 \$14.95 (Members \$13.45) (s/h 1.80).



D



E

**E. DINO QUILT.** Snuggle up with Stegosaurus, Tyrannosaurus and friends on this lively, colorful quilt. Comfortable machine care cotton/polyester blend, plumped with Kodol® fiberfill and lined in cloud-soft brushed nylon. See more million-year-old creatures in our popular Dinosaur Hall at the National Museum of Natural History. Twin: 2910 \$37.50 (Members \$33.75) (s/h 3.75).\*

**F. WIZARD OF OZ PUPPET ORNAMENTS.** Dorothy, The Tin Man, The Cowardly Lion, and The Scarecrow have left Oz to come to your house! Pull the cord to move the arms and legs of our four beloved characters. Made of wood, they are charming ornaments. Our SITES exhibition, "Hollywood: Legend and Reality," will be traveling to museums across America through 1987. Set of 5, including tiny book. 9009 \$15.00 (Members \$13.50) (s/h 1.95).

**G. COTTONTAIL RABBIT.** Our cheerful rabbit is ready to find a home in any Easter basket or amid a collection of beloved stuffed animals. Made of soft, squeezable plush in varying hues of beige and brown, our bunny has a soft round white tail just like his friend Peter Cottontail! Machine washable. 10" l. x 7" h. 6831 \$15.00 (Members \$13.50) (s/h 1.95).

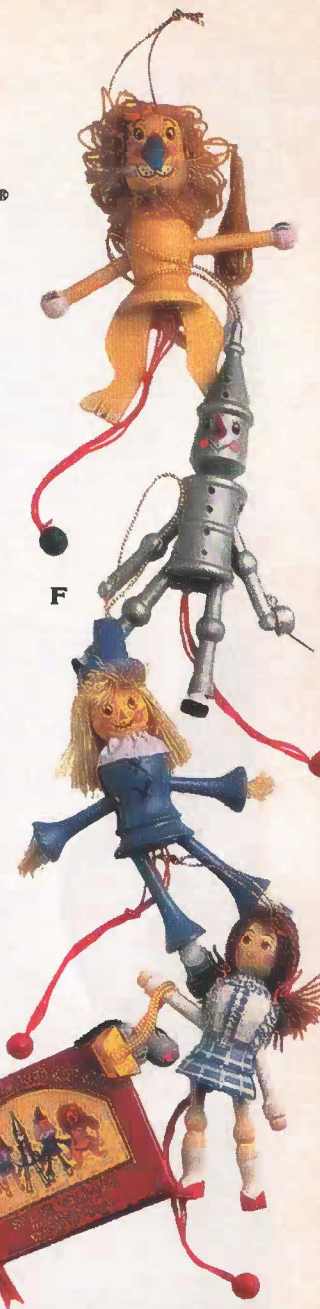
**H. LUNA PARK GAME OF GEARS.** Perfect pastime for little engineers! Here's an innovative way to introduce a young child to the world of mechanics! Brightly-colored blocks and shapes fit together to twist and turn like real gears for mechanical devices. The set also includes pegs and people. Over 100 pieces. Made of heavy-duty plastic, washable. 6297 \$12.50 (Members \$11.25) (s/h 2.60).



H

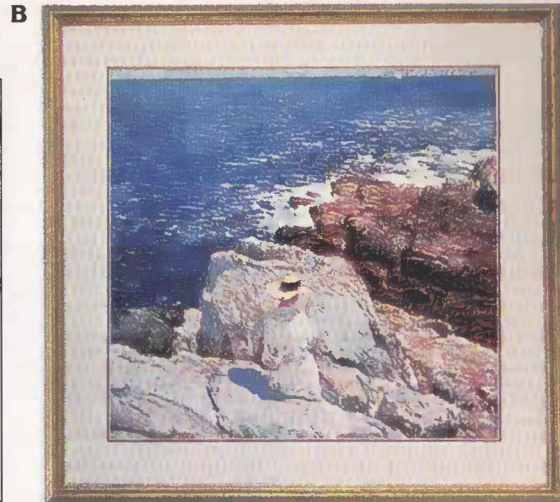
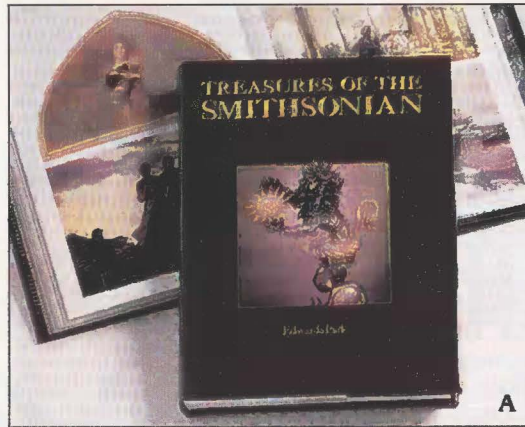


G



F





**A. TREASURES OF THE SMITHSONIAN** is packed with the masterpieces of art, history, invention, and nature in our diverse collections. 400 photographs, 480 pages. Hardback. 1032 \$60.00 (Members \$39.96) (s/h 2.49).

**B. "THE SOUTH LEDGES, APPLIEDORE,"** by American impressionist Childe Hassam (1859-1935), is carefully reproduced in our print from the original 1913 oil painting in our National Museum of American Art. Double-matted under acrylic pane in a golden wood frame. 27"w. x 26"h. overall. 5574 \$110.00 (Members \$99.00) (s/h 8.25)\*.

**C. VENETIAN BLUE GLASS NECKLACE.** Beads highlighted with decorative patterns similar to the subtle stripes accenting these exquisite deep blue glass beads are in our collection at the National Museum of American History. 23"l. 4560 \$27.00 (Members \$24.30) (s/h 1.95).

**D. TEA FOR TWO.** Hall China, known for its style and durability since 1903, reissues this all-American classic. Two pots and matching tray in gleaming blue porcelain that's non-porous and chip resistant. Microwave proof. Blue: 7380 White (Not shown): 7382. \$30.00 (Members \$27.00) (s/h 2.60).

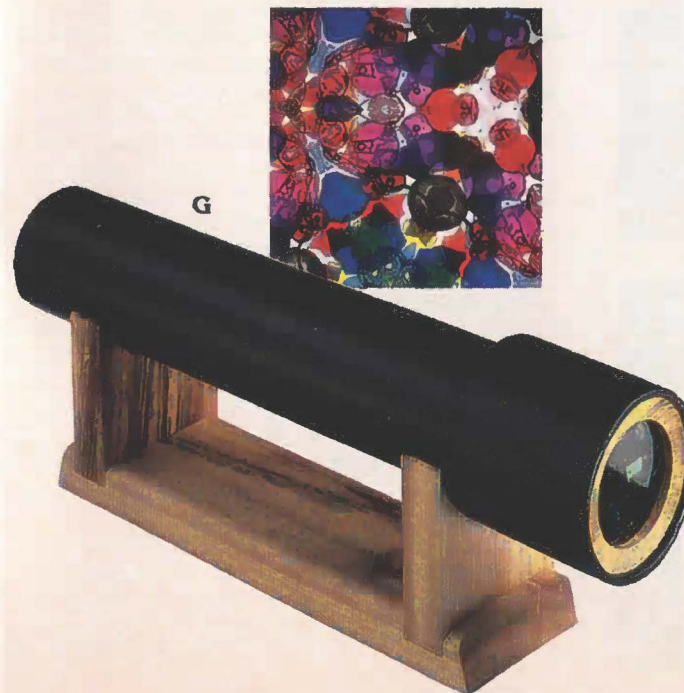


**E. PIRELLI PORTFOLIO.** It looks like suede, feels like suede, but is actually washable, water-resistant, featherweight Tuflex™ rubber. Just throw in all your papers and go! Our rich textured portfolio offers dual zippers and double handles. 14"h. x 18"w. 2221 \$48.00 (Members \$43.20) (s/h 2.50).

**F. ARTIST SCARF.** Flowing spontaneous color and exuberance distinguish the painting by Friedel Dzubas. Reproduced just for us from the original, our elegant imported silk crepe scarf comes signed by the artist. 32" sq. 2131 \$35.00 (Members \$31.50) (s/h 1.95).

**G. LEATHER KALEIDOSCOPE.** A pleasure to touch and to turn, our kaleidoscope shows the interplay of color and light with stained glass chips suspended in oil. Myrtlewood stand incl. Signed by the artist Craig Huber. 12½"l. 6076 \$95.00 (Members \$85.50) (s/h 1.95).

**H. PABLO.** Just connect these colorful, graphic shapes to each other and voila! You've created a masterpiece. The possibilities are endless. Includes 120 laminated cardboard shapes, 53 black plastic "H" connectors and compact carrying case. 6705 \$35.00 (Members \$31.50) (s/h 1.80).







B



A

**A. STERLING SILVER "CONCHO" EARRINGS.** Shimmering sterling silver, scalloped and shaped into dramatic drop earrings. Designed by Navajo Ray Tracey, these earrings take their traditional motif from the Spanish "concho" or decorative medallion. Native American jewelry may be seen in our collections at the National Museum of Natural History. For pierced ears. 1 3/8"l. x 7/8"w. 4213 \$35.00 (Members \$31.50) (s/h 2.30).

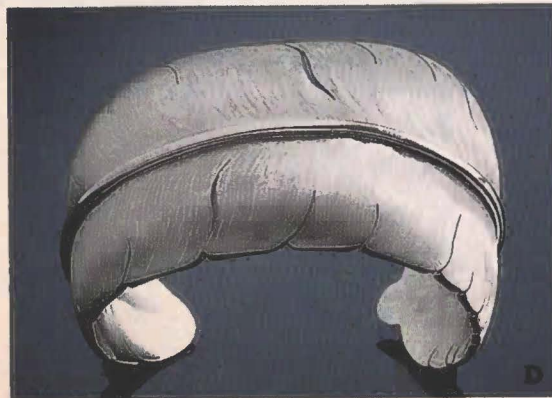
**B. DOULTON ARABESQUE SCARF.** Delicate flowers and leaves highlight our lovely imported silk satin scarf adapted from a pair of faience vases in our 1876 Centennial Exhibit. 36"sq. 2120 \$36.00 (Members \$32.40) (s/h 1.95).

**C. ZUNI SNAKE EYE RING.** A small work of art made just for us, our intriguing ring displays five rows of silver highlighted with turquoise. Shaped in the traditional snake eye setting, our ring is carefully handcrafted by members of the Crafts Cooperative at the Pueblo of the Zuni. Size 5: 4470. Size 6: 4471. Size 7: 4472. Size 8: 4473. Size 9: 4474. Size 10: 4475. \$45.00 (Members \$40.50) (s/h 2.45).



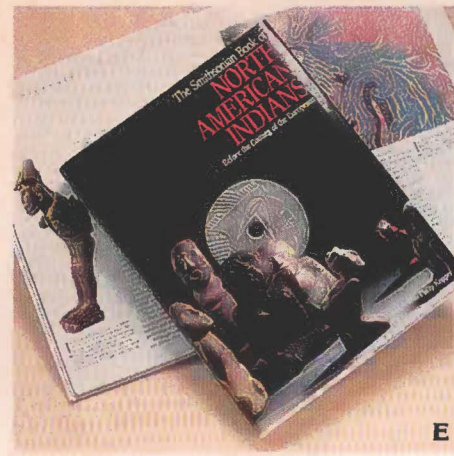
C

**D. STERLING SILVER FEATHER BRACELET.** Designed by American Indian Michael Kirk, this dramatic contemporary cuff is made of sterling silver by members of the Isleta Pueblo in New Mexico. Carefully crafted by hand, our bracelet is polished, engraved and finely pierced to evoke a feather. 1 1/2"w. 4605 \$150.00 (Members \$135.00) (s/h 2.60).

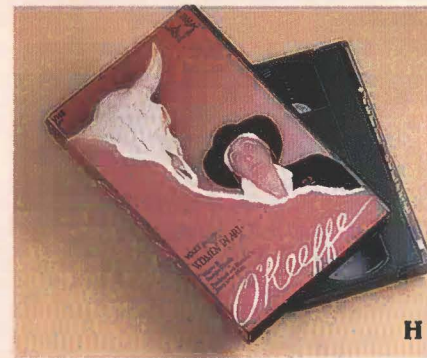


D

**CREDIT CARD  
ORDERS PHONE  
703-455-1700**



E



H

**E. THE SMITHSONIAN BOOK OF NORTH AMERICAN INDIANS.** This extraordinary book explores the Indians' diverse cultures, complex languages, and environments before the coming of the Europeans. Hardback. 288 pgs. 325 illus., 293 in color. 1055 \$50.00 (Members \$29.97) (s/h 2.95).

**F. TURQUOISE NECKLACE.** A Smithsonian exclusive, our superb hand-crafted necklace is made of polished turquoise beads by craftsmen of the Santo Domingo Pueblo. Approx. 19"l. 4501 \$350.00 (Members \$315.00) (s/h 4.20).

**G. SHADOW BOX EARRINGS.** Handmade by craftsmen from the Zuni Indian Pueblo in New Mexico, these earrings feature turquoise beads set in sterling silver. For pierced ears. Approx. 3/8" 4255 \$18.00 (Members \$16.20) (s/h 1.80).

**H. GEORGIA O'KEEFFE VIDEO.** Here are conversations with O'Keeffe herself discussing her inspiration from the colors, light and landscape of the Great Southwest. Full color. 58 minutes. Beta: 1919. VHS: 1918. Each \$39.95 (Members \$35.95) (s/h 1.90).

**I. FISH BOWL VASE.** Hand-painted fish decorate our prized porcelain vase made by American potter Judith Poe. Examples of contemporary American porcelains and ceramics are included in our Renwick Gallery exhibits. 7"h. 7381 \$45.00 (Members \$40.50) (s/h 3.25).

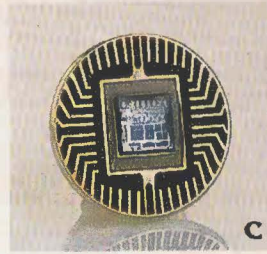


F



I





**A. PARAFOIL.** Simple and fun to fly, this frameless rip-stop nylon kite requires no assembly and folds into your pocket. 22" x 34". Colors will vary. Imported. 6456 \$19.00 (Members \$17.10) (s/h 1.80). Use 50-lb string. 6446 \$3.50 (Members \$3.15) (s/h 1.10).

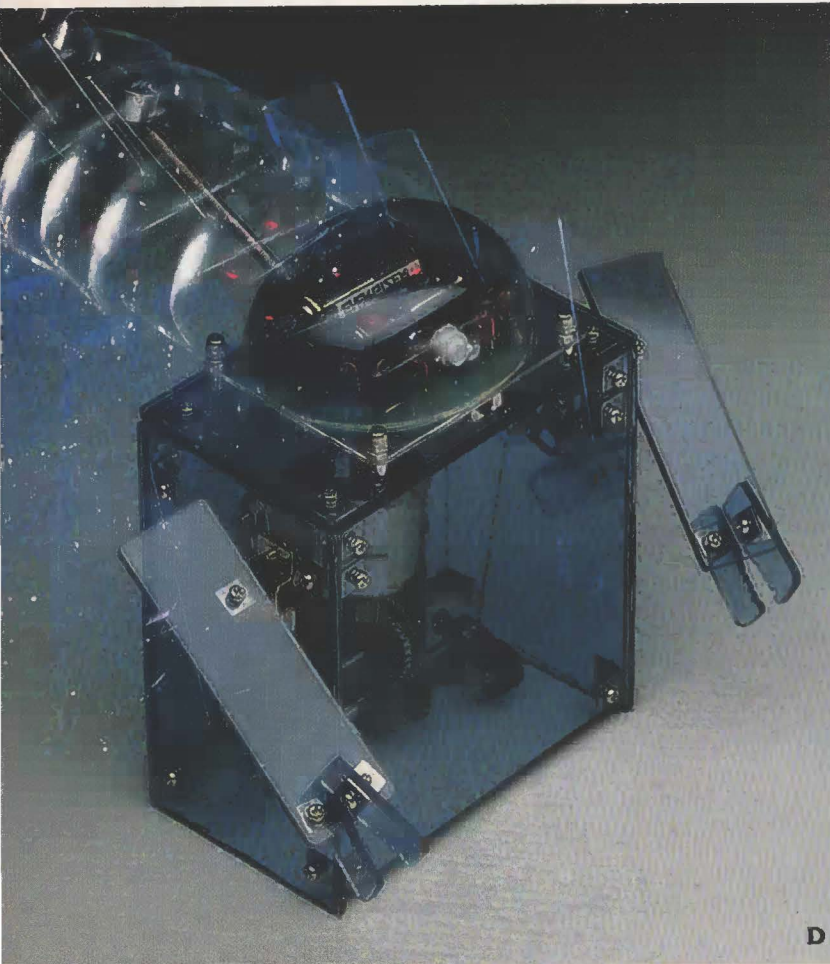
**B. COMPUTER TIE.** Our handsome navy tie displays green and white circuit board and edge connector motifs. Polyester with silk motifs. Made in U.S.A. 2049 \$14.00 (Members \$12.60) (s/h 1.95).

**C. COMPUTER CHIP TIE TACK.** Perfect for the computer cognoscenti as a symbol of our time, this tie tack is an actual computer chip. The surrounding design is modeled after a chip carrier. Handsomely finished in gold-plated brass with black enamel. 5/8" dia. 4910 \$12.00 (Members \$10.80) (s/h 1.85).

**COMPUTER CHIP EARRINGS** (Not shown). 5/8" dia. Pierced: 4256 \$20.00 (Members \$18.00) (s/h 2.10).

**D. MR. TECHNOMAN KIT.** Clap your hands and watch him go! This friendly little robot is representative of others in our National Museum of American History. The kit comes with a sound sensor control unit ready made, and includes screwdriver, batteries, and complete assembly instructions. Ages 12 and up. 5" tall. 6336 \$25.00 (Members \$22.50) (s/h 1.95).

**CREDIT CARD  
ORDERS PHONE  
703-455-1700**

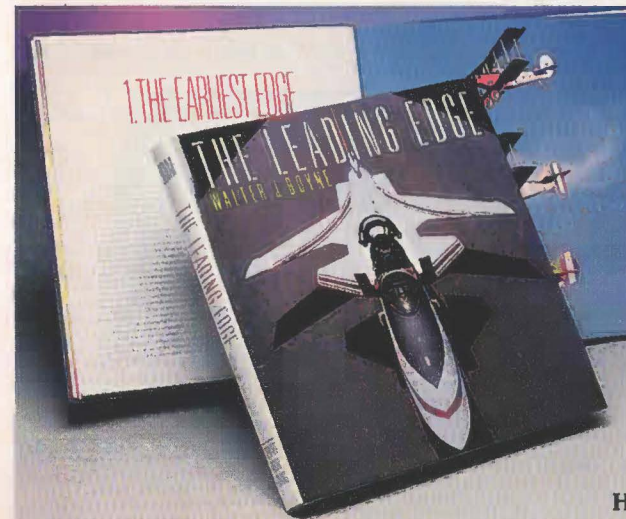


**E. LOCKHEED P-38L LIGHTNING MODEL KIT.** Our scale model, of balsa wood with plastic parts, features movable controls, retractable landing gear, droppable bombs, and decals, with instructions. Adaptable for rubber power, gas-free flight, or U-Control. Wingspan 40", scale 3/4". 6330 \$40.00 (Members \$36.00) (s/h 3.10).

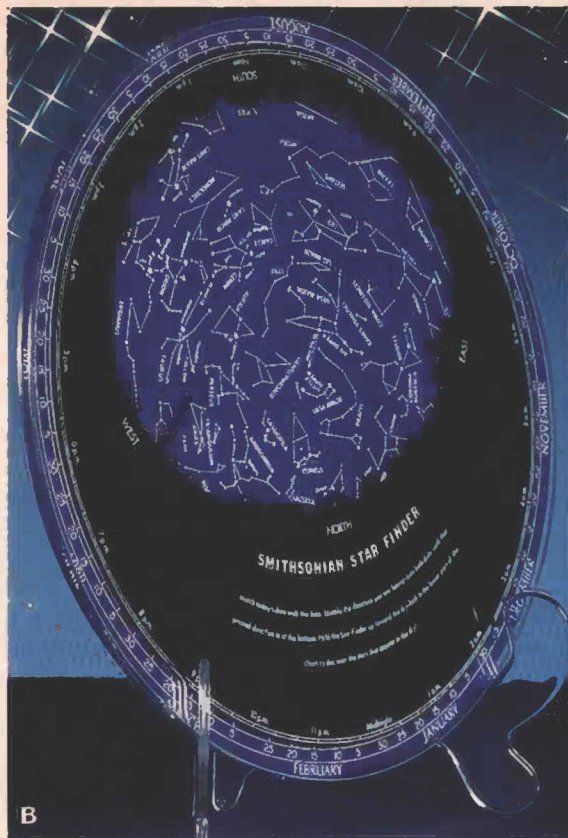
**F. TO FLY.** Our award-winning popular movie at the National Air and Space Museum takes you on a skyward voyage via various aircraft including a gas balloon ascension in New England and a rocket flight into space. 27 minutes. Beta: 1820. VHS: 1819. Each \$29.95 (Members \$26.95) (s/h 1.90).

**G. STAR PAPERWEIGHT.** American artist John Healey uses finely beveled angles and highly polished surfaces to refract and reflect light in this dazzling design. Made of only the finest German crystal, it is a brilliant reflection of our prized collection of paperweights in the National Museum of American History. Approx. 3" dia. 7624 \$135.00 (Members \$121.50) (s/h 2.10).

**H. THE LEADING EDGE.** Journey through the history of flight with Walter Boyne. Signed by the author and illustrated with blueprints, historical documents, aviation memorabilia, plus 175 photos, 100 in color. Hardback. 1011 \$29.95 (Members \$26.95) (s/h 3.10).







B



C



A

**A. NASA WALKIE-TALKIE SET.** Our space toy system includes 12 transistor voice-activated headset, backpack and hand-held walkie-talkie operable up to 750 feet. (Uses 2 9-volt batteries (not included). 6701 \$35.00 (Members \$31.50) (s/h 2.65).

**B. SMITHSONIAN STAR FINDER.** Our 13" acrylic disk contains a silk-screened map of the major stars, constellations and the Milky Way. An overlay disk designates the horizon and has a time ring around its rim—line them up and see what will appear in the sky on any given night! 11" lucite stand incl. 6032 \$32.00 (Members \$28.80) (s/h 2.55).\*

**C. COLUMBIA SHUTTLE KIT.** Build your own super-sized Columbia Space Shuttle, complete with detachable rocket boosters. Includes 62 cardboard parts, drafting tape and instructions. Approx. 3½ ft. long. 6350 \$25.00 (Members \$22.50) (s/h 3.10).\*

**D. TO SPACE AND BACK.** Travel with U.S. astronaut Sally Ride 200 miles above the earth's surface. Learn what it's like to eat, sleep and work while you are totally weightless. Ride keeps her young audience spellbound as well as spacebound. Hardback. 96 pgs., 50 color photographs. 1509 \$14.95 (Members \$13.45) (s/h 2.50).



D



E

**E. MAGNETIC SPACE MARBLES®.** Just like the "toys in space" that went up in a 1985 Discovery Shuttle Mission, these marvelous marbles provide hours of fun and dozens of demonstrations of gravity (or lack of it), inertia, momentum, and other basic principles of physics. Fifty magnetic marbles in drawstring bag. 6202 \$9.00 (Members \$8.10) (s/h 1.85).

**F. SPACESUIT** lets youngsters share the adventure of space flight in their own blue nylon jumpsuit. Full body suit with torso and leg zippers; two pockets; flight, flag and shuttle patches; NASA insignia; knit wrist and neck cuffs; even velcro shoulder tabs to hold a backpack. Toddler small (2-3): 2952. Toddler large (4-5): 2953. Child small (5-7): 2954. Child medium (7-9): 2955. Child large (9-11): 2956. Each: \$38.00 (Members \$34.20) (s/h 1.95).

**G. SPINNING TOP** makes a rainbow of wonderful whirling colors in glorious hues of purples and pinks. Our beautifully crafted top is made in France of varnished wood. Spinning tops are included in the toy collections at our National Museum of American History. 7" h., 3½" dia. 6299 \$15.00 (Members \$13.50) (s/h 2.15).

**H. SET OF SLINKIES.** Fun for any child—no matter what age! This quintessential coiled spring toy is made of safe plastic. Our set of three comes in glorious shades of orange, green and blue. 6205 \$6.00 (Members \$5.40) (s/h 2.00).



F

**CREDIT CARD  
ORDERS PHONE  
703-455-1700**



H



G



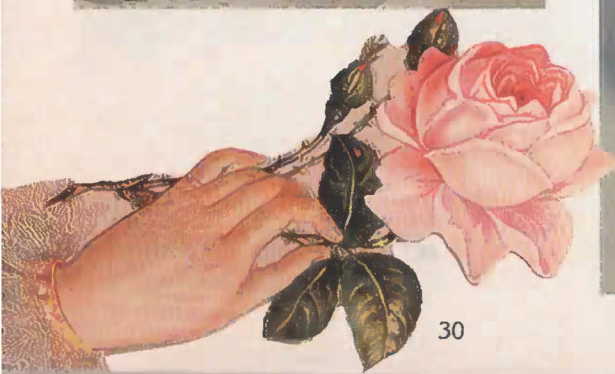


**A. MCGUFFEY'S ECLECTIC READERS.** A seven-volume set of the classics that have taught generations of Americans to read. Published in 1881, the series is liberally laced with moral lessons geared to fortifying one's character while teaching the alphabet, penmanship, vocabulary, and spelling. Hardback. 1501 \$39.95 (Members \$35.95) (s/h 3.30).



**B. DRESSER MIRROR.** Exclusive to the Smithsonian, our Queen Anne-style mirror tilts to your best advantage. Rich cherry finish and gleaming brass fittings make it the perfect complement to antique furniture. Its design was adapted from a late 18th-century magnifying lens on exhibit at our National Museum of American History. Approx. 19"h. 9½" dia. 3404 \$75.00 (Members \$67.50) (s/h 3.40)\*.

**C. ROMANTIC CARDS.** Our charming selection of nostalgic die-cut cards will add old fashioned charm to your special correspondence. Traditional cards similar to these are found in our National Museum of American History. Eight Victorian cards with envelopes, wrapped in a paper doily, tied with a ribbon, and boxed. 5335 \$16.00 (Members \$14.40) (s/h 1.70).



**CREDIT CARD  
ORDERS PHONE  
703-455-1700**



**D. TREE OF LIFE SCARF.** Made of pure imported silk, our elegant 32" square scarf is reproduced from a quilted cotton Indian bedcover, circa 1735, in our textile collections. 2106 \$26.00 (Members \$23.40) (s/h 1.60).



**E. STERLING SILVER AND GARNET NECKLACES.** Smithsonian exclusive. Our stunning necklaces are designed especially for us by Poppy Dandiya in Jaipur, India. In a tradition of design that is centuries old, each bead is meticulously made by hand. Set: 4525 \$275.00 (Members \$247.50) (s/h 3.10). 1. Approx. 30"l. 4523 \$150.00 (Members \$135.00) (s/h 2.45). 2. Approx. 29"l. 4522 \$125.00 (Members \$112.50) (s/h 2.45).

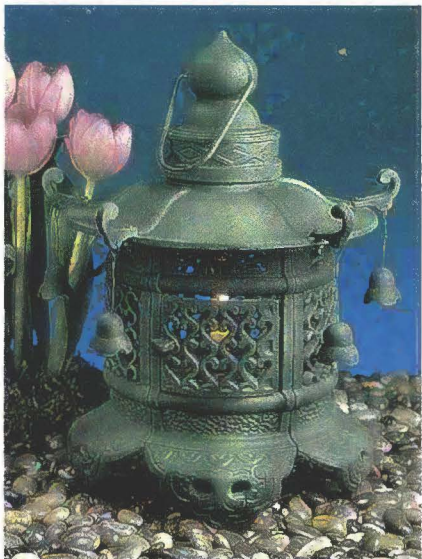


**F. GOLD AND GARNET RING** is patterned after a Victorian ring in our collection. Four faceted garnets are set into the fine lattice work of the tapered 14k gold band. Size 5: 4455. Size 6: 4456. Size 7: 4457. Size 8: 4458. Size 9: 4459. Size 10: 4460. Size 11: 4461. \$185.00 (Members \$166.50) (s/h 2.35).



**G. CARPET BAG,** exclusively ours, is as handsomely useful as those once carried by migrating opportunists after the Civil War. This striking handbag is made in Italy of Belgian carpet with leather handles and trim, brass feet and inside pocket. Approx. 7"h. x 14"l. x 5"w. 9925 \$75.00 (Members \$67.50) (s/h 2.55)\*.



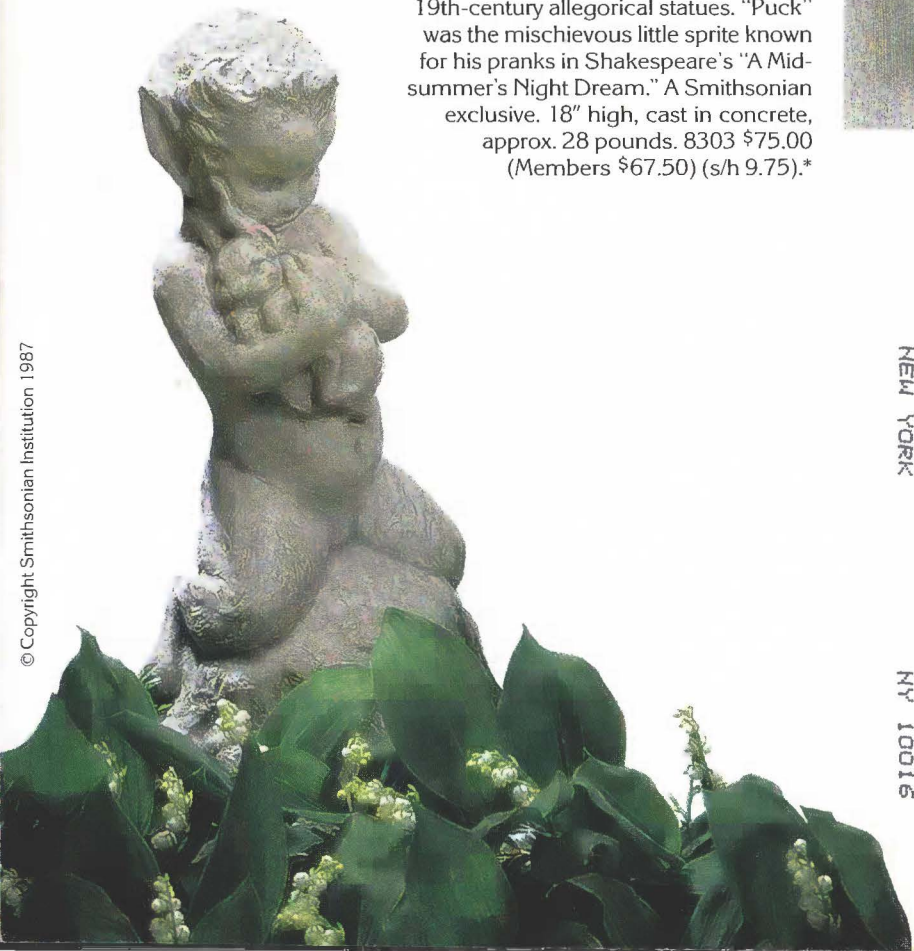


**JAPANESE LANTERN.** Our iron lantern features an intriguing temple-like roof, pierced walls, movable door, and detailed feet. Will add a note of Oriental charm to your home or garden. Must be weatherproofed to use outdoors. Candle not incl. 13" h. 8½" dia. 8027 \$36.00 (Members \$32.40) (s/h 5.80).\*

**AMETHYST AND CLOISSONNÉ NECKLACE.** This stunning necklace evokes the feeling and flow of springtime itself. Lovely purple amethyst and serpentine beads provide a charming complement

to lavender, green-flowered cloisonné beads. Amethyst and serpentine are on view in the Gem and Mineral Hall of our National Museum of Natural History. 27" l. 4520 \$150.00 (Members \$135.00) (s/h 2.60).

**"PUCK" GARDEN SCULPTURE.** The Smithsonian's Division of Horticulture includes in its collection a model of this charming little garden statue, which is in the style of 19th-century allegorical statues. "Puck" was the mischievous little sprite known for his pranks in Shakespeare's "A Midsummer's Night Dream." A Smithsonian exclusive. 18" high, cast in concrete, approx. 28 pounds. 8303 \$75.00 (Members \$67.50) (s/h 9.75).\*



**Smithsonian Institution**  
 Department 0006  
 Washington, D.C. 20073-0006

Postmaster: If not forwardable, deliver to current resident.

\*\*\*\*\*CAR-RT-SORT\*\*CR41  
 REV TORKOM MANOOGIAN  
 630 2ND AV  
 NEW YORK NY 10016

Organization  
 BULK RATE  
 U.S. POSTAGE  
 PAID  
 Smithsonian  
 Institution