

The Smithsonian Catalogue Spring 1988



Blue Bellflower Paperweight, see page 15

Welcome to the Smithsonian Catalogue for Spring 1988

On these pages you will find handsome reproductions, adaptations and other beautiful and useful items that reflect the rich diversity of the Smithsonian. As the world's largest complex of museums, art galleries and research facilities, it encompasses the vast and varied elements of America's cultural, social, scientific and artistic heritage.

Historical and educational information is provided on a Smithsonian card included with most products or on our packaging. All income from our catalogue supports our chartered educational purposes and activities.

A. SMITHSONIAN "PALM COURT" FURNITURE evokes the splendor of a Victorian parlour! Made for the Smithsonian by Brown Jordan, our traditional furniture with Victorian influences is adapted from a 1920's design in our Warsaw Collection of Business Americana. Elegant yet durable, it is made of high quality wicker with plump grey paisley cushions. The Smithsonian's Office of Horticulture collects and studies historic furniture and decorative arts related to the history of American horticulture. Stain retardant 100% cotton cushions. Antique white finish on wicker.



A

Allow 12-16 weeks for delivery.

1. LOUNGE CHAIR: 3026. \$1,150.00 (Members \$1,035.00) (s/h 76.00).*
2. OTTOMAN: 3027. \$660.00 (Members \$594.00) (s/h 44.55).*
3. LOVE SEAT: 3028. \$1,875.00 (Members \$1,687.50) (s/h 126.50).*
4. SOFA: 3029. \$2,500.00. (Members \$2,250.00) (s/h 162.00).*
5. END TABLE: 3030. \$475.00 (Members \$427.50) (s/h 32.00).*
6. COCKTAIL TABLE: 3031. \$575.00 (Members \$517.50) (s/h 38.80).*

B. GOLD AND GARNET RING is patterned after a Victorian ring in our collection. Four faceted garnets are set into the fine lattice work of the tapered 14k gold band. Size 5: 4455. Size 6: 4456. Size 7: 4457. Size 8: 4458. Size 9: 4459. Size 10: 4460. Size 11: 4461. \$210.00 (Members \$189.00) (s/h 3.00).



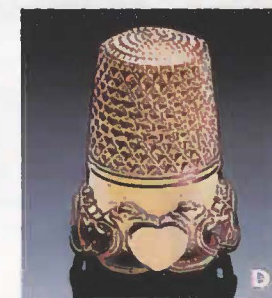
B

C. HEART PERFUME BOTTLE. Our pretty heart-shaped perfume bottle is perfect for holding precious scents and her interest. Our exclusive hand blown glass perfume bottle with ground stopper features delicate pink hearts blossoming on graceful vines and is created by Zellige Art Glass of California. The National Museum of American History includes art glass in its collections. Signed and dated. Approx. 4 1/4" h. 7167 \$140.00 (Members \$126.00) (s/h 2.90).



C

D. HEART THIMBLE. A Smithsonian exclusive by Simons Brothers. This gold-plated sterling silver thimble with delicately pierced band is reproduced from an original in our Mary Gallatin Hoppin Collection, which contains more than 400 unusual thimbles. A charming find for collectors. Approx. 7/8" h. 2616 \$32.00 (Members \$28.80) (s/h 2.05).



D

E. BLUE LACE AGATE AND PEARL EARRINGS. Designed exclusively for the Smithsonian, these exquisite earrings feature delicate pearls, oval amethysts, 8mm blue lace agate beads and 14k gold spacers and posts. Approx. 1" l. 4262 \$60.00 (Members \$54.00) (s/h 2.25).

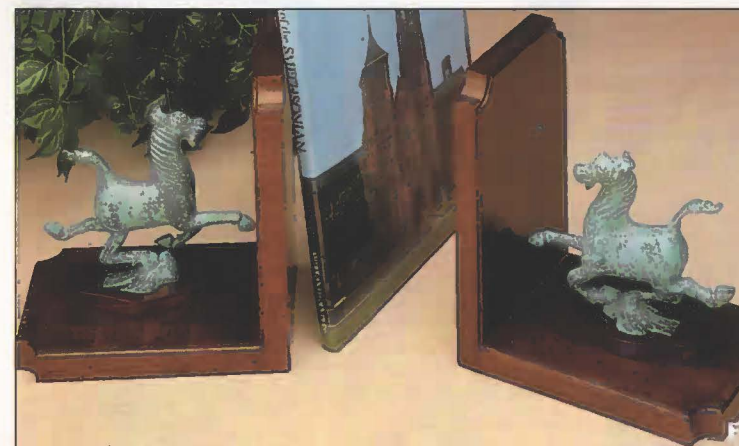
F. "HEAVENLY HORSES" BOOKENDS. Our pair of noble steeds mounted on rosewood bookends make a dramatic and dignified accent. Among the most famous statues in Chinese art, the "heavenly horses" of Kansu are reproduced here in brass with an antiqued bronze finish. Chinese bronze sculptures are included in our Asian ethnological collections in our National Museum of Natural History. 7" h. x 6 3/4" l. x 4 1/2" w. with felt-lined bases. 7982 \$65.00 (Members \$58.50) (s/h 4.35).

G. BLUE LACE AGATE AND PEARL NECKLACE. Fresh water pearls and amethysts highlight our necklace of 6mm blue lace agate beads and 14k roundels and clasp. These minerals are representative of those found in our Gem and Mineral Hall. 32" l. 4513 \$185.00 (Members \$166.50) (s/h 2.45).



E

**CREDIT CARD
ORDERS PHONE
703-455-1700**



F

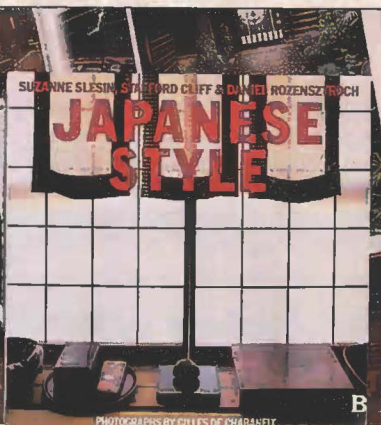


G



A

A. IMARI LAMP. The richly detailed design of our lamp includes the traditional bird and flower motif in handsome hues of rust, blue and green, characteristic of the Imari style. Imari ware is well represented in our National Museum of Natural History. 25" h. with fabric shade. 3633 \$155.00 (Members \$139.50) (s/h 10.35).*



B

B. JAPANESE STYLE. Peer inside Japan's private homes and observe simple elegant interiors that express the Japanese lifestyle. 770 full-color photos. Hardback. 287 pgs. 1612 \$35.00 (Members \$31.50) (s/h 3.80).



C

C. LAPIS HEART PENDANT. Our lovely lapis heart-shaped gemstone dangles on a delicate chain of 14k gold. Lapis is included in our Gem and Mineral Hall at the National Museum of Natural History. Heart: approx. 3/4" (shown actual size); chain: 16". 4538 \$75.00 (Members \$67.50) (s/h 2.05).

D. JAPANESE CHERRY BARK CHEST. Japanese samurai used to make cherry bark objects. This chest, made of cherry bark which repels dampness and dryness, is ideal for storing stationery or jewelry, especially with the secret panel in the bottom drawer. Polished cherry bark veneer with iron handles. 7 3/4" h. x 9 3/4" w. x 6 1/2" deep. 7935 \$100.00 (Members \$90.00) (s/h 4.05).

E. GREEN JADE NECKLACE. Made from natural nephrite jade, the 8mm beads on this necklace are strung and individually knotted by hand. Classic yet contemporary. Approx. 25" l. 4508 \$95.00 (Members \$85.50) (s/h 2.15).



E



F

F. IMARI SERVING SET. Porcelain serving bowl with colorful Imari pattern reflects the Japanese tradition of making their meals a feast for the eyes as well as the palate. Includes four matching chopstick (or knife) rests and four sets of varnished wood chopsticks. Server, 12" l. 7383 \$40.00 (Members \$36.00) (s/h 3.95).*



G

G. CARVED JADE EARRINGS. Deep green ovals are intricately hand carved with a Chinese floral design and set in vermeil. Made of natural nephrite jade, our earrings are adapted from a pair in the National Museum of Natural History. Approx. 1" l. For pierced ears, 14k posts: 4204. Clip: 4203. Each pair \$95.00 (Members \$85.50) (s/h 2.25).

H. RED PAISLEY SILK TIE. A traditional favorite, paisley patterns originally came to Europe from India. Examples of paisley designs are in the National Museum of American History. 100% silk twill. Made in Italy. 2025 \$22.00 (Members \$19.80) (s/h 2.20).



H

I. GEMSTONE TREE sparkles with petals of carnelian, rose and white quartz, aventurine, sodalite and blue lace agate. Handmade in the tradition of Chinese artists who created gemstone trees for the Emperor's Winter Palace. Approx. 8" h. Jade and brass base. 8047 \$65.00 (Members \$58.50) (s/h 2.50).



I



D



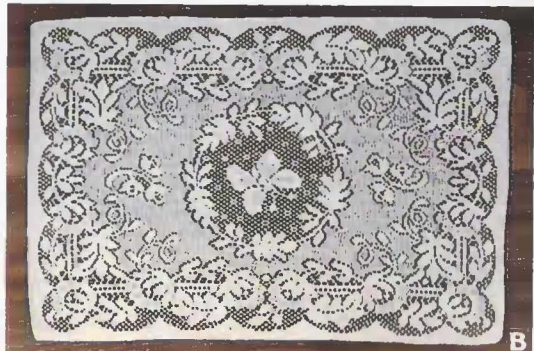
A

A. FLOWER GARLAND HAT. Festooned with flowers and leaves and encircled with satin ribbon, our hand-trimmed hat will add a springtime look to any lady's outing. A Smithsonian exclusive, our hat is similar to trimmed straw hats in the National Museum of American History. 15" dia. 2907 \$80.00 (Members \$72.00) (s/h 2.50).

B. BUTTERFLY LACE TABLECLOTH, PLACEMATS AND NAPKINS. Reproduced from a Belgian appliqué lace tablecloth in our textile collection. Made of washable 80% cotton/20% Dacron® polyester, by Quaker Lace just for us. Available as a tablecloth in four sizes, or as a set of four striking placemats. Matching napkins feature the butterfly motif on one corner. Ecrú. **1.** 70" round: 2347 \$38.00 (Members \$34.20) (s/h 3.25). **2.** 52" x 70" oblong: 2344 \$32.00 (Members \$28.80) (s/h 3.25). **3.** 64" x 84" oblong: 2345 \$38.00 (Members \$34.20) (s/h 3.25). **4.** 64" x 102" oblong: 2346 \$58.00 (Members \$52.20) (s/h 3.25). **5.** Set of 4 placemats, each 13" x 19": 2343 \$22.00 (Members \$19.80) (s/h 2.00). **6.** Set of 4 matching napkins, each 17" sq.: 2342 \$16.00 (Members \$14.40) (s/h 2.00).



B

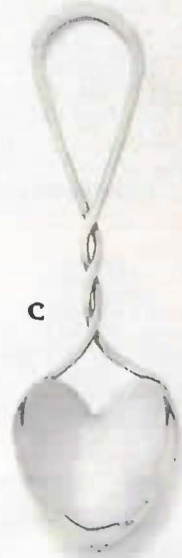


B



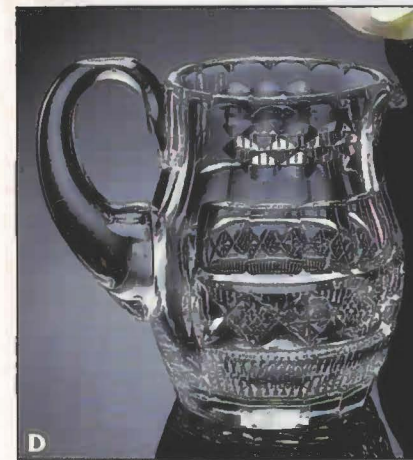
B

C. STERLING SILVER LIVING SPOON is inspired by a traditional Celtic betrothal gift given by the groom to his bride-to-be. Our handmade sterling silver version comes from the Scottish Isle of Mull. The Division of Domestic Life in our National Museum of American History includes silver spoons in its collections. Approx. 3 7/8" l. 7042 \$40.00 (Members \$36.00) (s/h 2.15).



C

D. WATERFORD PITCHER of full lead crystal is magnificent to behold. Reproduced just for us by Waterford Crystal, its dazzling cuttings and flawless design are patterned after a pitcher made in Ireland in 1790. The original is on exhibit at the National Museum of American History. Mouth blown and hand cut. 6 3/4" h. Holds 30 ounces. 7627 \$280.00 (Members \$252.00) (4.65).



D



E



G

G. EIGHTEENTH-CENTURY WINE COASTER. George Washington owned the original of this silver-plated wine coaster reproduced for us by the Kirk Steff Company. A beautiful reminder of our heritage, this coaster is as useful today as it was in the 1700s. 7000 \$29.95 (Members \$26.95) (s/h 2.50).

H. NOTTINGHAM LACE AND SATIN PILLOW. Romantics at heart will love our shimmery satin heart-shaped pillow, lavishly trimmed with Nottingham Lace, worn by royal brides in England. Lovely as a ring pillow for a wedding or as an attractive accessory. Examples of lace finery from around the world are found in the National Museum of American History. Made in England. 12" w. 2936 \$45.00 (Members \$40.50) (s/h 2.45).



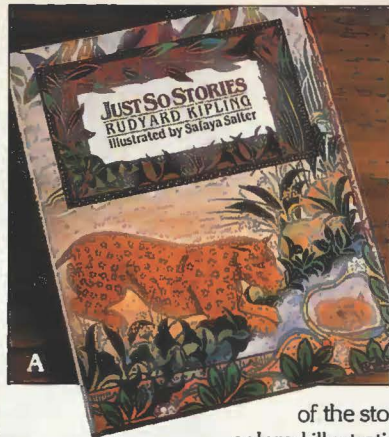
F

F. AMETHYST AND CLOISONNÉ NECKLACE. Lovely purple amethyst and serpentine beads provide a charming complement to lavender, green-flowered cloisonné beads. Amethyst and serpentine are on view in the Gem and Mineral Hall of our National Museum of Natural History. 27" l. 4520 \$150.00 (Members \$135.00) (s/h 2.45).

H



**CREDIT CARD
ORDERS PHONE
703-455-1700**



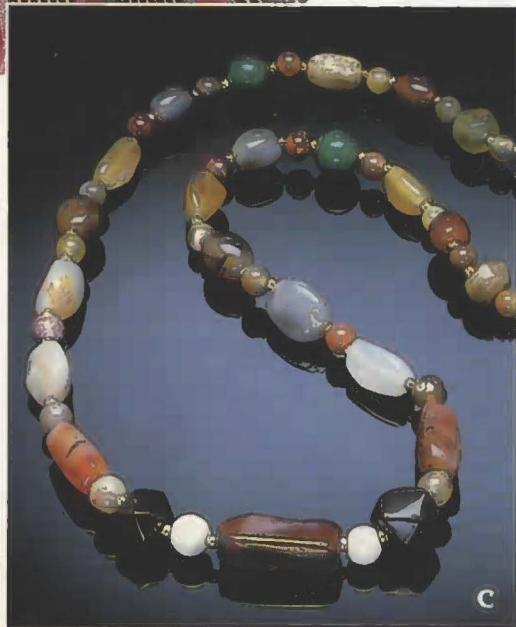
A. JUST SO STORIES. Rudyard Kipling's fun-to-read-aloud tales, from "How the Leopard Got His Spots" to "The Cat That Walked by Himself." The exotic settings

of the stories come to life in the brilliantly colored illustrations. Hardback. 96 pgs. 1552 \$15.95 (Members \$14.35) (s/h 2.50).

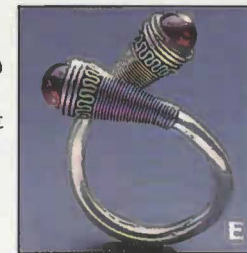
B. AFRICAN DESIGN SCARF. Craftsmanship and creativity combine in this dramatic silk scarf inspired by a masterpiece of West African weaving in our National Museum of African Art. A Smithsonian exclusive, our self-fringed scarf, made in Italy of 100% silk twill, can be worn as a scarf or sash. Approx. 18" x 62". 2153 \$32.00 (Members \$28.80) (s/h 2.20).

C. ASSORTED AGATE NECKLACE. A glorious procession of colors gives rich and unusual beauty to our natural gemstone necklace. The natural stones vary in color and delicate veining and are strung by hand so that no two necklaces are alike. Each approx. 30" l. 4515 \$20.00 (Members \$18.00) (s/h 2.05).

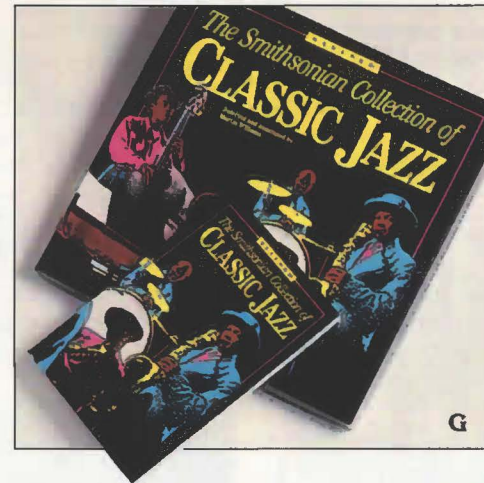
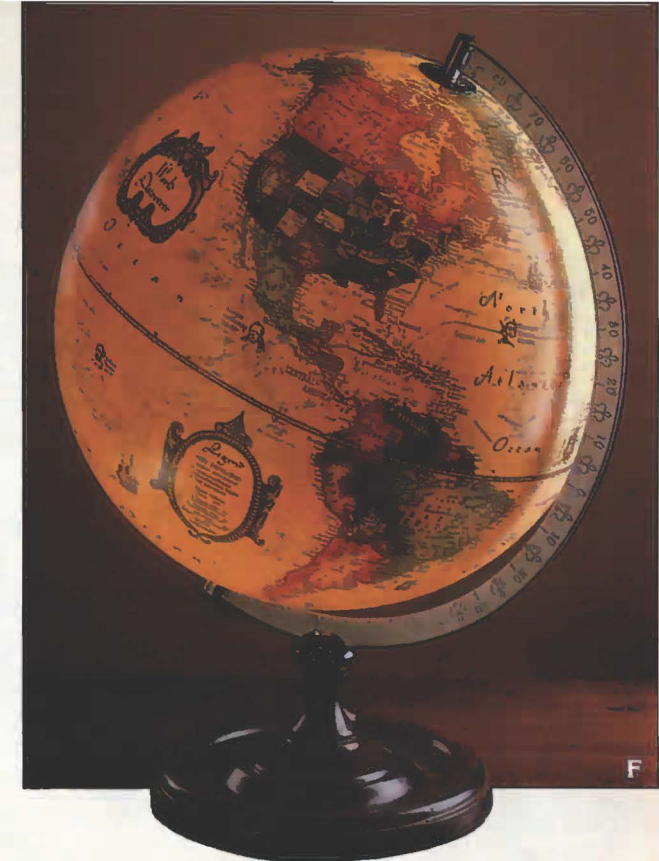
D. WISTFUL CHILD. Our contemplative child will charm you. Hand carved of teakwood by craftsmen in northern Thailand, her kneeling pose is based on traditional Oriental neck rests. The Smithsonian's outstanding Thai collections include gifts to the United States from the second King of Siam. Approx. 3½" w. x 8" l. x 5¾" h. 8081 \$70.00 (Members \$63.00) (s/h 2.50).



E. STERLING SILVER AND GARNET RING. A Smithsonian exclusive. Our garnet ring is designed and made by hand in Jaipur, India, in a silver setting that cleverly adjusts to any ring size. 4425 \$42.00 (Members \$37.80) (s/h 2.05).



F. WORLD GLOBE. Turn the light on and see full sharp maps with political borders and ocean floors. Turn the light off and see a physical map of the world. Executed in "old map style" with antique finish, our up-to-date globe notes dates of such important voyagers as Columbus, Magellan and others. 12" illuminated globe on polished wood base. 6007 \$65.00 (Members \$58.50) (s/h 12.00)*

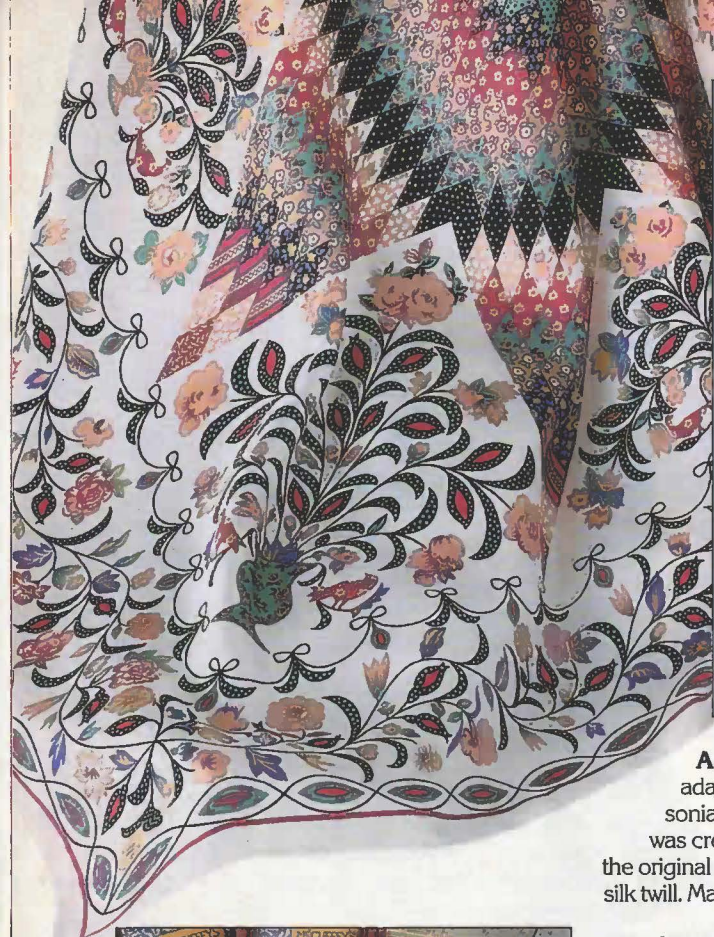


G. REVISED CLASSIC JAZZ. Our newly revised Smithsonian Collection of Classic Jazz includes 95 performances by such greats as Joplin, Armstrong, Goodman, Monk and others. 120-page booklet incl. 1. Set of seven LP records: 1846. 2. Set of five cassettes: 1847. Each \$49.96 (Members \$44.96) (s/h 3.49).

H. CLASSIC CHEVRON & BRASS SCOPE. Our exclusive kaleidoscope has a distinguished look with its European hand-marbled paper and gleaming polished brushed brass. Filled with Austrian crystals, gazing into this scope is like viewing a stained glass window that moves and changes patterns! This handsome kaleidoscope is designed by Olga Plam and Gina Truex. Made in U.S.A. by Silver Deer, Ltd. Approx. 9¾" l. 6014 \$95.00 (Members \$85.50) (s/h 2.45).



I. BEADED MALI BRACELETS. Featuring traditional Mali beadwork on leather, designs and colors will vary since each bracelet is handmade. Approx. 1" w. Set of three: 4618 \$14.00 (Members \$12.60) (s/h 1.95).

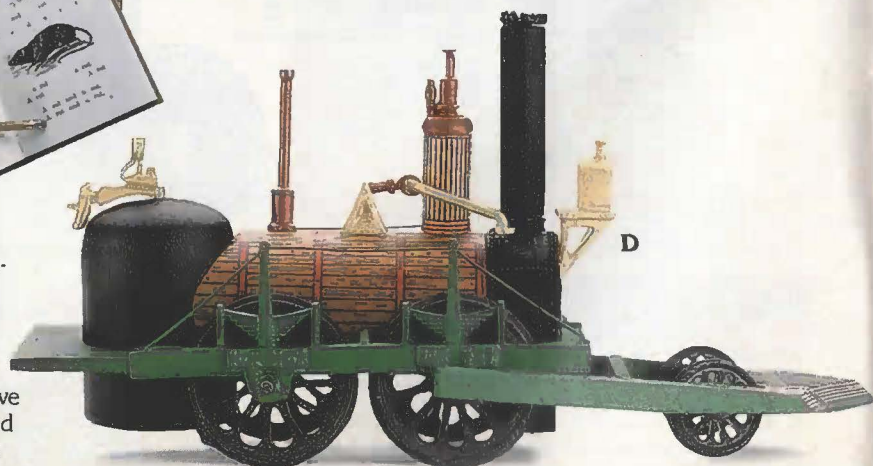


A. TOTTENVILLE SCARF. Our luxurious silk scarf is adapted from the original "Rising Sun" quilt in the Smithsonian's textile collection. Made in 1825, the original pattern was created in pieced work and applique. The jubilant spirit of the original is expressed in a rich mixture of wonderful hues. 48" sq. silk twill. Made in Italy. 2158 \$56.00 (Members \$50.40) (s/h 2.20).

B. GOLD BEAD NECKLACE is exclusively ours. Rich beautiful color, heavyweight, and flattering length bespeak superb craftsmanship. 18k gold plate over silver 6mm beads, safety clasp. 24" l. 4545 \$150.00 (Members \$135.00) (s/h 2.45).



C. MCGUFFEY'S ECLECTIC READERS. A seven-volume set of the classics that have taught generations of Americans to read. Published in 1881, the series is liberally laced with moral lessons geared to fortifying one's character while teaching the alphabet, penmanship, vocabulary and spelling. Hardback. 1501 \$39.95 (Members \$35.95) (s/h 3.75).



D. JOHN BULL. All aboard! Our miniature train is a detailed adaptation of the John Bull, the world's oldest operable locomotive. Built in England in 1831, the original is now in our National Museum of American History. This decorative locomotive is made of cast iron and wood. 6" l. 6339 \$25.00 (Members \$22.50) (s/h 2.00).

E. LETTER CARRIER PURSE. Styled after 19th-century mail pouches in our collections, our exclusive adaptation is made of sturdy top-stitched Italian leather with zippered pocket inside and attractive antiqued brass fittings. 12" w. x 11" h. x 3" deep. Adjustable shoulder strap. 2220 \$110.00 (Members \$99.00) (s/h 4.00).



F. JAZZ QUARTET TIE jazzes up any outfit with 20th-century musical instruments from the Smithsonian collection. Navy and red polyester with silk motifs. Made in U.S.A. 2029 \$16.50 (Members \$14.85) (s/h 2.20).

G. VICTORIAN ENGAGEMENT RING, a Smithsonian exclusive, is reproduced from the original, circa 1870. The faceted garnet is set off by 18 seed pearls in a 14k gold setting. An exceptional engagement or dinner ring. Size 5: 4402. Size 6: 4403. Size 7: 4404. Size 8: 4405. \$410.00 (Members \$369.00) (s/h 3.30).



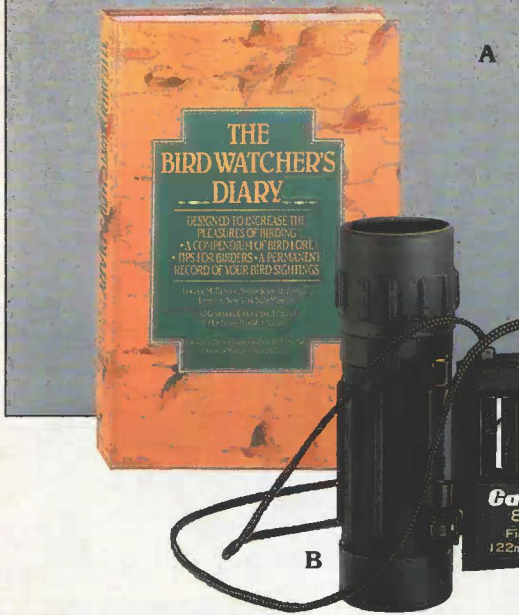
H. JAZZ TIE TACK adds a sophisticated tone to any tie or lapel. Our exclusive miniature saxophone is handmade and hand finished. Approx. 1" l. 1. Sterling Silver: 4911 \$25.00 (Members \$22.50) (s/h 1.95). 2. 14k Gold (not shown): 4912 \$125.00 (Members \$112.50) (s/h 2.25).



I. U.S. MARINE CORPS MINIATURE MARCHING BAND. Figures by Britains, Ltd., of London are coveted collector's pieces. Die cast of metal and hand painted. Scale: 1/32. 10 marines. 6720 \$35.00 (Members 31.50) (s/h 2.70).



**CREDIT CARD
ORDERS PHONE
703-455-1700**



A

A. "THE BIRD WATCHER'S DIARY" by Edgar Reilly and Gorton Caruth. Next time you spot that red-tailed hawk or the pileated woodpecker, mark it down! Designed to increase the pleasures of birding, a compendium of bird lore and tips for birding also serves as a permanent record of your bird sightings. Paperback. 218 pgs. 1613 \$12.95 (Members \$11.65) (s/h 2.40).



B

B. POWERFUL PORTABLE BINOCULARS are perfect for bird-watching, sports events or the theater! Our folding, lightweight roof prism binoculars provide color-corrected optics and bright, clear images. These 8x21mm (8 times magnification at 525 feet) binoculars have a rubberized surface, center focus, neck strap and vinyl case with belt loop. 3 3/4" l. 6079 \$125.00 (Members \$112.50) (s/h 2.35).



C

C. BRASS AND HORN BRACELETS. The bright dash of brass set next to glistening black horn makes these traditional bracelets from India come alive with style! Set of three: 4612 \$18.00 (Members \$16.20) (s/h 2.05).

D. MEERKATS T-SHIRTS. Bright-eyed little meerkats, who band together in groups for survival, would like you to team up with them. Machine washable 50% poly, 50% cotton. Made in U.S.A. Adult sizes: Small, 2990. Med., 2991. Lg., 2992. X-Lg., 2993. Each \$10.95 (Members \$9.85) (s/h 2.10). Child sizes: 2-4, 2994. 6-8, 2995. 10-12, 2996. 14-16, 2997. Each \$7.95 (Members \$7.15) (s/h 2.10).



D

E. MEERKATS. Our perky little meerkats make perfect pets! Real African meerkats live at the Smithsonian's National Zoo. Silk-screened cotton with polyester fiberfill and polystyrene beads. Graduated sizes: 10", 9" and 8". Set of 3: 6821 \$28.00 (Members \$25.20) (s/h 2.70).



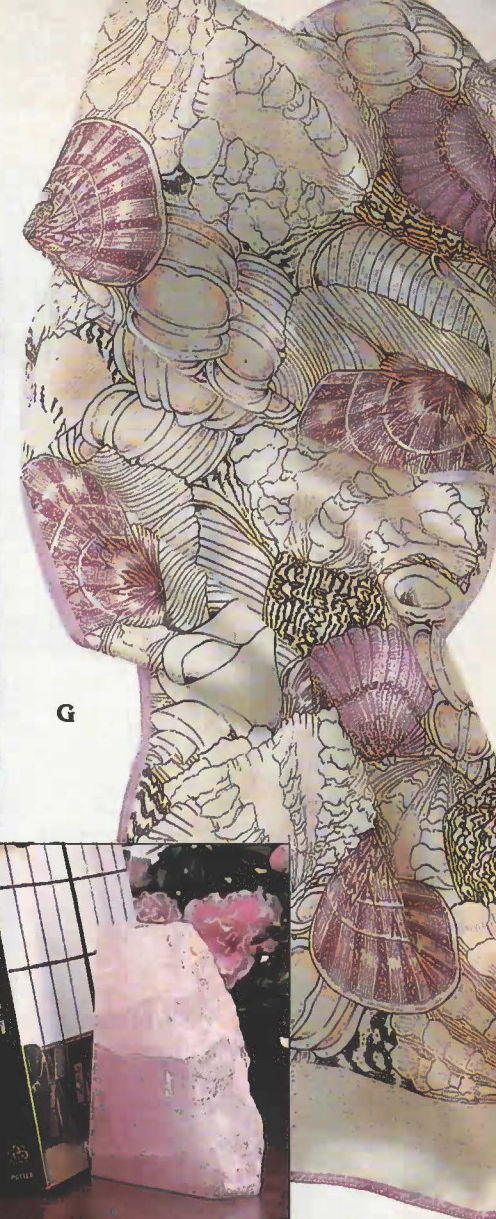
E

F. AMETHYST NECKLACE. Amethyst is associated with the planet Jupiter and is said to bring good luck. Its color ranges from pale violet to deep purple. 10mm beads. Hand knotted. 18" l. 4597 \$135.00 (Members \$121.50) (s/h 2.45).



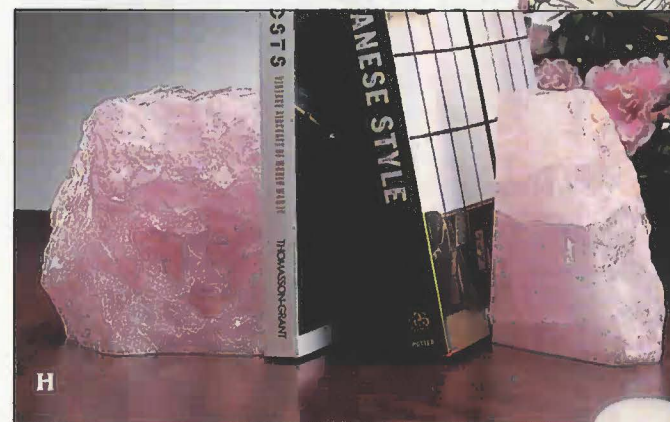
F

G. SHELL SCARF. The Miraculous Staircase Shell, the Scallop, the Glory of the Seas Cone, these and other shells from the Smithsonian collection are displayed on our imported pure silk scarf. Comes with a card identifying each shell. 12" w. x 52" l. 2121 \$24.00 (Members \$21.60) (s/h 2.20).



G

H. ROSE QUARTZ BOOK-ENDS. Magnificent "glaciers" of sparkling rose quartz form naturally beautiful bookends. Each stone is unique, but has been smoothly polished on sides and the base. Examples of rose quartz are found in our National Museum of Natural History. Approx. 6 1/2" h., average 7-8 lbs. 7974 \$75.00 pair (Members \$67.50) (s/h 5.90).



H

I. OUR GRACEFUL SEAGULL is skillfully sculpted of stoneware by Andersen Design of Maine. Hand decorated, our sculpture bears a lifelike resemblance to a resting seagull. Specimens of birds from all over the world are displayed in realistic settings in our National Museum of Natural History. 8010 \$32.00 (Members \$28.80) (s/h 2.00).



I

**CREDIT CARD
ORDERS PHONE
703-455-1700**



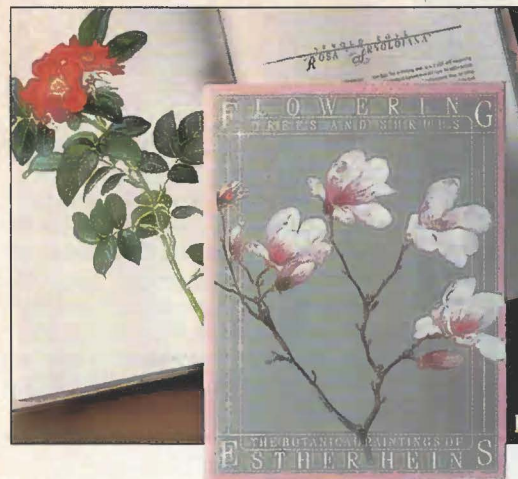
A. BUTTERFLY WIND BELL catches a gentle breeze. Attach a calligraphy poem to send by the wind. Our cast iron wind bell with poem is a traditional Japanese decorative household object. Not weatherproofed. 5" w. 8109 \$18.00 (Members \$16.20) (s/h 2.45).

B. CHINESE FLORAL SCARF. A delicate profusion of peonies, symbolic of feminine beauty, is silk-screened onto our luxurious scarf of imported silk satin. The graceful pattern is reproduced from a 19th-century Chinese embroidered shawl in our National Museum of Natural History. 32" sq. 2128 \$37.50 (Members \$33.75) (s/h 2.20).

C. MUSICAL TREASURE BOX. A Smithsonian exclusive. Exquisite Italian marquetry, or inlay, lid opens to reveal a velvet-lined box to the strains of Tchaikovsky's "Swan Lake" in a fine Reuge 18-note movement. 5" sq. 7926 \$54.00 (Members \$48.60) (s/h 2.50).

D. SMITHSONIAN SUNDIAL is an adaptation of one made in London in the early 18th century now in our Collection of Mechanisms. Made exclusively for the Smithsonian by Virginia Metalcrafters, this handsome solid brass sundial on a decorative iron base is wonderfully suited for any garden. 12" dia. 24"h. **1.** Sundial with base. 8117 \$230.00 (Members \$207.00) (s/h 14.45). ***2.** Sundial only. 8118 \$125.00 (Members \$112.50) (s/h 6.05).*

E. JADE BANGLE BRACELET. Made of natural nephrite jade with a hinged joint and clasp with safety chain. Examples of jade are in the National Museum of Natural History. 4616 \$40.00 (Members \$36.00) (s/h 2.05).



F. "FLOWERING TREES AND SHRUBS: Botanical Drawings of Esther Heins." Breathtakingly detailed, these stunning flowering plant portraits evoke the joy inspired in Esther Heins by each fragile cutting. Arranged by season. Text by Judith Leet. Hardback. 148 pgs., 69 color plates. 1615 \$29.95 (Members \$26.95) (s/h 3.45).

G. BLUE BELLFLOWER PAPERWEIGHT highlights brilliant blue blossoms, beautifully complemented by delicate bud sprays of white flowers. Our exclusive hand blown glass paperweight is signed and dated by American artist Chris Buzzini. Approx. 2 1/4" h. x 3" dia. 7608 \$400.00 (Members \$360.00) (s/h 3.55).

H. THREE MUSES GARDEN PLAQUE. Like their mythological predecessors, these delightful goddesses bring grace and good fortune to wherever they are—sunroom, patio or garden wall. Cast in cement, our plaque is hand finished and sealed for all weather protection. Hanging hook included. Approx. 12" square, 11 lbs. 8300 \$36.00 (Members \$32.40) (s/h 6.55).

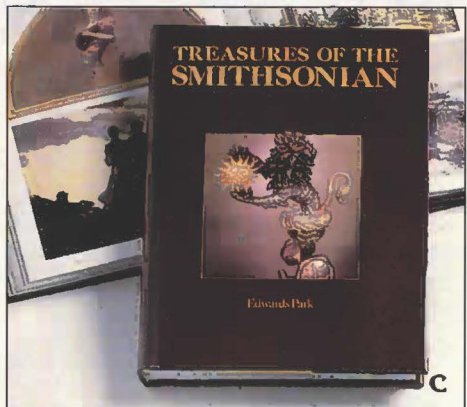
I. BUTTERFLY PORCELAIN NECKLACE. Porcelain beads hand painted with pretty pastel butterflies are the perfect accessory for spring. Accented with silver and gold paint, the beads are hand knotted on silk. Chinese porcelain decorative arts are included in our National Museum of Natural History. Approx. 24" l. 4811 \$35.00 (Members \$31.50) (s/h 2.15).

**CREDIT CARD
ORDERS PHONE
703-455-1700**





A. IMARI PORCELAIN PLATES illustrate the intricate beauty of Japanese Imari ware. Created exclusively for the Smithsonian, these plates sparkle with accents of gold throughout the richly-patterned floral and geometric design. The motif is adapted from a 19th-century Imari plate given by the Japanese legation as an example of their finest ceramic ware and now in our National Museum of Natural History. 8½" dia. Set of 4: 7386. \$32.00 (Members \$28.80) (s/h 5.00). For matching mugs, see page 22.



B. SILK TIE. Richly hand woven of pure silk twill, our tie takes its distinguished design from tile patterns in the rotunda of the Smithsonian's Arts and Industries Building. A Smithsonian exclusive imported from Italy. Tan and burgundy on navy. 2004 \$22.00 (Members \$19.80) (s/h 2.20).

C. TREASURES OF THE SMITHSONIAN is packed with the masterpieces of art, history, invention and nature in our diverse collections. 400 photographs. 480 pages. Hardback. 1032 \$60.00 (Members \$39.96) (s/h 3.80).



D. VICTORIAN GARNET AND PEARL EARRINGS are a wonderful complement to our breathtaking Victorian engagement ring. Designed exclusively for the Smithsonian, faceted garnets surrounded by tiny natural seed pearls create exquisite earrings. ¾". 14k gold settings and posts. Handmade in U.S.A. 4224 \$275.00 (Members \$247.50) (s/h 2.85)



E. GALLOPING HORSE OF KANSU is one of the most famous statues in Asian history and art. Our noble horse is reproduced in brass with an antiqued bronze finish. 7" h. x 7" l. with wooden stand. 8066 \$37.00 (Members \$33.30) (s/h 2.90).

**CREDIT CARD
ORDERS PHONE
703-455-1700**

Detach at Perforation and Place in Envelope.

(703) 455-1700
Credit Card Orders by Phone

Method of Payment

Payment Enclosed (Sorry, no CODs)

VISA MasterCard American Express

--	--	--	--	--	--	--	--	--	--	--	--	--

Account No. (All Digits)

Credit Card Exp. Date _____

Signature _____

(Required for all credit card orders)

Smithsonian Order Form

Department 0006
Washington, D.C. 20073-0006

Name and Address:

K 115
REV TOKYON MHCOCGIAH
630 2ND AV
NEW YORK NY 10016

Home Telephone No. (_____) _____
Area Code

Business Telephone No. (_____) _____
Area Code

Item No.	Qty.	Size	Description	Price Each	s/h	Gift Packaging (\$2.75 ea.)	Total	Alternate Shipping Address
								123
								123
								123
								123
								123
								123

123
123
123
123
123

Multiples of the same item number mailed to the same address incur only one shipping and handling charge.

Express Service
(see ship info)

I am a Smithsonian Member Yes No
Your Smithsonian Membership discount is identified by the word "Members."

Total Amount

For gift shipments, specify address below and circle appropriate number in last column next to item. Items not so marked will be shipped to your address at top of form.

Address 1

Address 2

Address 3

Name	Name	Name
Address	Address	Address
City, State, Zip	City, State, Zip	City, State, Zip
Gift Card Message	Gift Card Message	Gift Card Message

Delivery: We ship orders as received and will notify you in the instance that a delay of over 30 days is anticipated. Whenever possible, your order will be shipped via UPS, so make certain to give your street address. All the items will not necessarily be shipped at the same time or in the same package.

Express Delivery: If you would like express service, please see shipping information located elsewhere on this insert or ask our operators for information.

Satisfaction Guaranteed: Should anything you order from the Smithsonian not meet your expectations, it can be returned within 90 days for replacement or refund.

Smithsonian Gift Packaging Service: Each package comes with a stretch cord and gift tag with the Smithsonian seal. \$2.75 each (no discount). For details see elsewhere on order form.

PLEASE SEE ADDITIONAL PRODUCTS INSIDE

SHIPPING INFORMATI

Shipping and Handling: shown in parenthesis (s/h) price for surface shipment U.S. Multiples of the same incur only one shipping and charge.

Foreign Addresses: For shipment to Canada, double each and for overseas surface each charge.

EXPRESS SERVICE

We offer two types of Express Service. This service is available to rural route addresses.

Standard Air: Orders Monday through Friday (EST) will be delivered 3-5 days from order date. The per delivery address (continental U.S.) is \$7.50 plus the handling cost of each item. Service to Alaska and Hawaii \$10.00 to the above charge plus the sender's telephone number.

Priority One: Delivery business days from order date. Charge of \$18.50 plus handling per address worldwide (continental U.S.; Alaska and Hawaii \$28.50).

Asterisked Items: A few items marked with asterisks (*) cannot be gift packaged on the continental U.S.

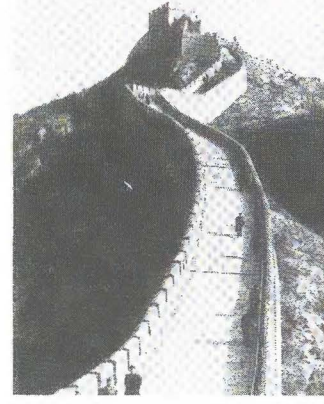
TELEPHONE ORDERS

You may speed your order by calling (703) 548-8000, 9 hours a day, 7 days a week. Operators will be on duty 9:00 AM - 5:00 PM (EST), Monday through Friday. At other times your order will be recorded and processed the next business day. Please leave your order blank and attach the catalogue at hand when you call.

CUSTOMER SERVICE

Inquiries on Orders or Shipping: (202) 357-1826, 8-4 Eastern Time, Monday through Friday.

Travel to China—**SMITHSONIAN Style!**



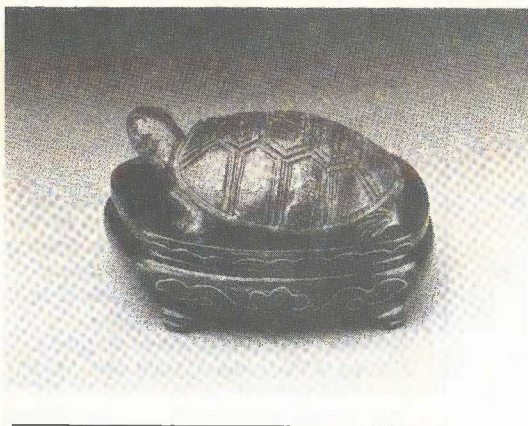
For the past decade, Smithsonian Associates have traveled the breadth of China, discovering the past, present, and future of this vast country through in-depth, thoughtfully-designed study tours. This year's programs include a study of Chinese antiques and decorative arts and a trek along the legendary Silk Road. These and seven other exciting itineraries combine travel, study, adventure, and enjoyment. All tours are led by study leaders who are carefully chosen for their knowledge of China and

who share your spirit of discovery. These China programs—as well as more than 100 study tours to destinations throughout the U.S. and around the world—are open to all Smithsonian Associates and attract inquisitive travelers... people of all ages and experience who are eager to broaden their intellectual horizons. For our 1988 China study tour catalog, send \$2.00 to Smithsonian Associates Travel Program, Dept. 0049, Washington, D.C. 20073-0049.

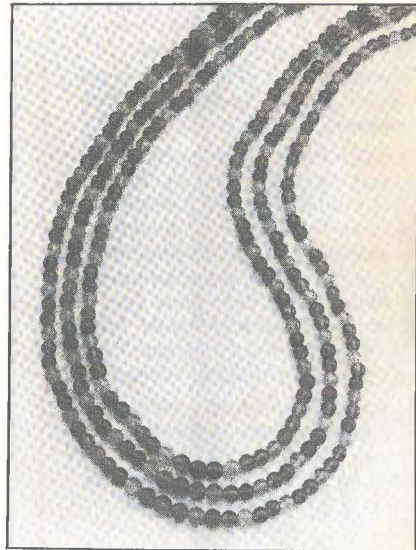


Smithsonian Custom Gift Packaging Service

We will be pleased to prepare your gift using our special Smithsonian packaging. Our exclusive designs are appropriate for children and adults. Each package comes with a stretch cord and gift tag with the Smithsonian seal. \$2.75 each (no discount).



LAPIS TURTLE. The Smithsonian's world famous collection of minerals and gems housed in our National Museum of Natural History includes many gemstone carvings. This classic blue lapis lazuli turtle is carved by hand from a single piece of lapis and rests on a footed wooden display stand. Approx. 2" l. 8063 Orig. \$150.00. Now \$98.00 (members \$88.20) (s/h 2.20).



AMETHYST AND AQUAMARINE NECKLACE. This unusual combination of two gently colored semi-precious stones is made exclusively for the Smithsonian. Approx. 26" l. graduated 4mm-6mm beads. 4542 Orig. \$275.00. Now \$220.00 (Members \$198.00) (s/h 2.80).



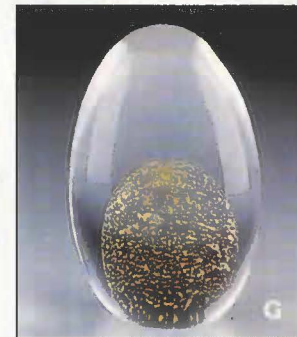
BUTTERFLY BOW takes its design from a hand-embroidered Chinese wall hanging in our National Museum of Natural History. Exclusively ours, the 4½" x 53" oblong scarf is folded to create a double layer of luxurious imported silk satin. 1. Royal Blue: 2137. 2. Bright Pink: 2139. Each Orig. \$20.00. Now \$15.00 (Members \$13.50) (s/h 2.15).



F

F. BUTTERFLY SCARF. The striking design of this elegant, imported pure silk scarf is adapted from a hand-embroidered Chinese wall-hanging in our Anthropological Collection. The oblong scarf comes in navy blue and red, 64" x 11". Navy: 2104. Red: 2108. Each \$32.00 (Members \$28.80) (s/h 2.20).

G. GOLD AND GLASS EGG PAPERWEIGHT. Gleaming with 24k gold, our exclusive glass egg is clearly precious! Masterfully hand blown, it is made by the second generation of a family of glass artists. Glass paperweights are included in our collections at the National Museum of American History. Approx. 2¾" h. 7643 \$45.00 (Members \$40.50) (s/h 1.95).



G

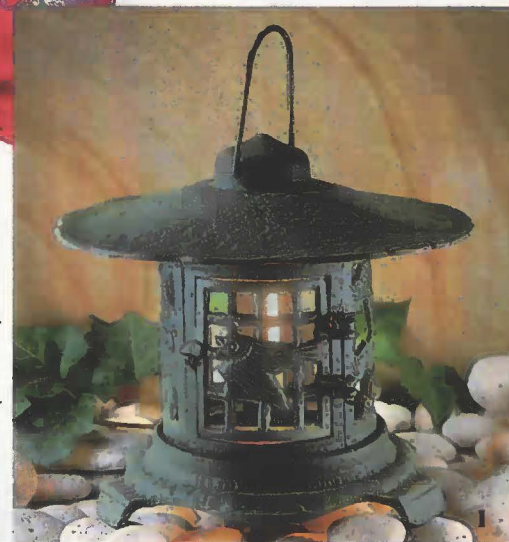
H. GARNET AND GOLD NECKLACE. A wealth of garnets in round and faceted shapes combine with fluted 14k gold beads for a necklace of outstanding beauty reflecting our Gem and Mineral Collections. 25" l. 4812 \$295.00 (Members \$265.50) (s/h 2.75).



H

I. ORIENTAL LANTERN.

Add an Oriental aura to your home or garden with our iron lantern like ones used in Japan to illuminate outdoor landscapes. Features include a verdigris finish, intricately pierced walls, movable door with bird motif and tripod feet. Must be weatherproofed for outdoor use. Candle not incl. Approx. 10½" h. x 11" dia. 8099 \$36.00 (Members \$32.00) (s/h 5.75).



I

A. ETRUSCAN HORSE. This splendid bronze steed makes a striking sculpture for present day residences, although it is inspired by an Etruscan statue of the past. Ancient Etruscan artifacts are found in the collections of our National Museum of Natural History. Cast in bronze with verdigris patina. Approx. 11" h. x 7" l. including base. 8008 \$48.00 (Members \$43.20) (s/h 3.70).



B. LAPIS DROP EARRINGS. Unusual sculpted beads highlighted with polished and fluted 14k gold create earrings of dramatic grace and beauty. A Smithsonian exclusive, these radiant blue delicate drop earrings of genuine lapis feature 14k gold posts. 4214 \$65.00 (Members \$58.50) (s/h 2.25).



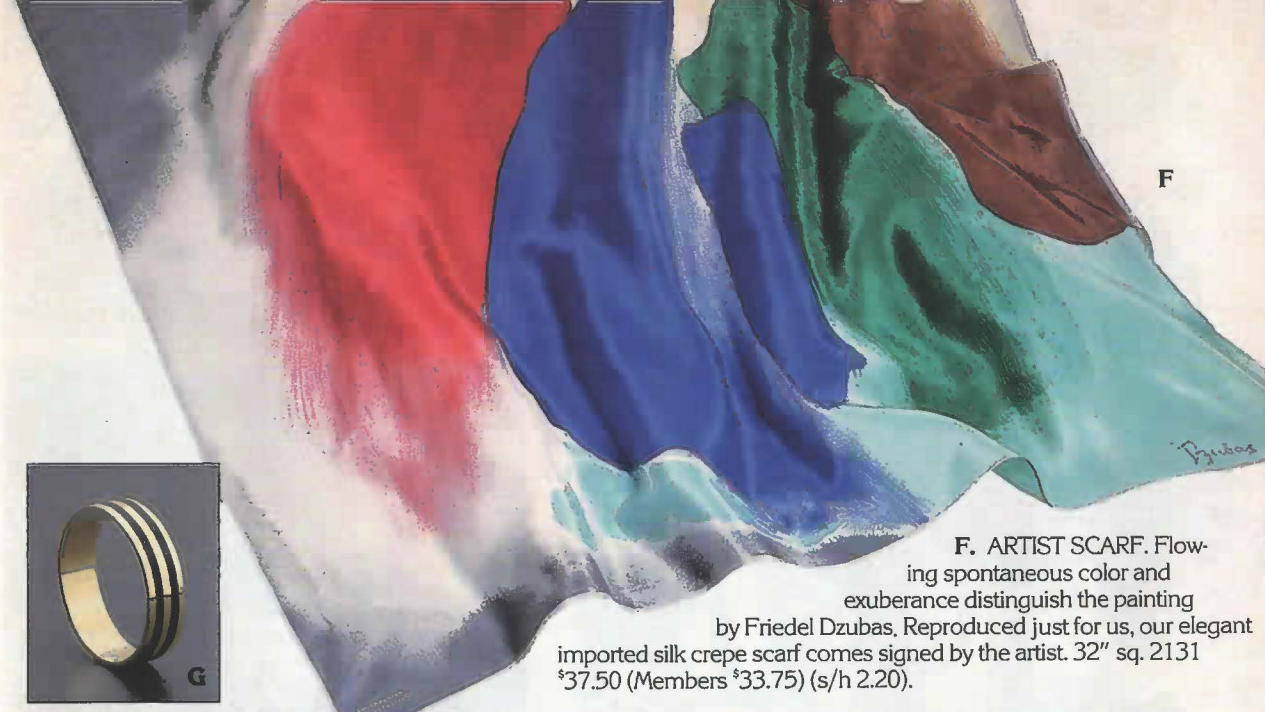
C. TRIPLE STRAND VENETIAN NECKLACE. Our glistening glass bead necklace is entirely handmade on the Italian island of Murano, famous throughout centuries for glassmaking. Two strands of blue glass highlight the center strand of chevron beads, handpainted with molten glass in the traditional Venetian style. Murano glass is included in our collections at the National Museum of American History. Approx. 22" l. 4821 \$70.00 (Members \$63.00) (s/h 2.15).



D. PAISLEY NOTE CARDS. Give your notes added distinction with our exclusive paisley note cards. 18 folded cards with 18 paisley-lined envelopes are presented in a folded portfolio for safekeeping. Paisley designs similar to this are found in the collections of several of our museums. 4 1/2" x 6" 5325 \$12.50 (Members \$11.25) (s/h 2.50).



E. BRASS TELEIDOSCOPE. Shining brass is intricately embossed on our attractive teleidoscope. Similar to a kaleidoscope but without moving parts, you look through it to watch the world reflected in spectacular patterns. Made with optical quality mirrors and acrylic lens, each is made in America by Stephen and Francine Swennes. Signed and dated. Approx. 9" l. x 1" dia. 6015 \$35.00 (Members \$31.50) (s/h 2.10).



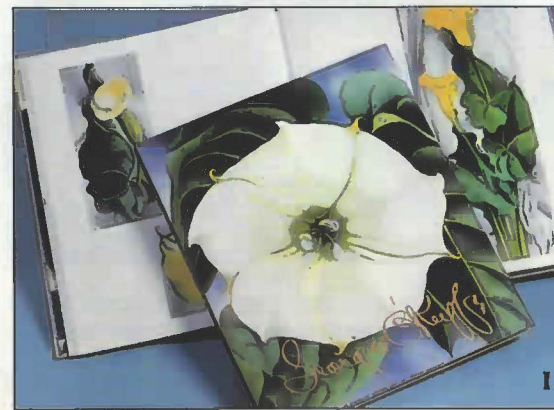
F. ARTIST SCARF. Flowing spontaneous color and exuberance distinguish the painting by Friedel Dzubas. Reproduced just for us, our elegant imported silk crepe scarf comes signed by the artist. 32" sq. 2131 \$37.50 (Members \$33.75) (s/h 2.20).



G. DECATUR RING. Our exclusive reproduction of the 1804 original is made of 14k gold with inset bands of black enamel. A stunning wedding band or friendship ring. Size 5: 4412. Size 6: 4416. Size 7: 4419. Size 8: 4420. Size 9: 4421. Size 10: 4422. Size 11: 4423. Size 12: 4424. \$190.00 (Members \$171.00) (s/h 2.65).



H. "PICASSO: THE MAN AND HIS WORK" illuminates the life of the legendary artist. Over 600 works of art chronologically illustrate Picasso's many styles, while exclusive candid footage and photos reveal episodes from his life. Special gift-boxed edition includes two 45-min. videos: Part 1 (1881-1937) and Part 2 (1938-1973), b&w/full color. VHS: 1916. BETA: 1917. Each set: \$79.95 (Members \$71.95) (s/h 2.35).



I. GEORGIA O'KEEFFE. 100 FLOWERS. One hundred flower paintings unfold with graceful beauty in this gorgeous book celebrating Georgia O'Keeffe's 100th birthday. Paintings from museums and private collections are reproduced in an oversized format with full-page illustrations. Hardback. 160 pgs. 13 3/8" x 16". 1130 \$100.00 (Members \$90.00) (s/h 3.80).

**CREDIT CARD
ORDERS PHONE
703-455-1700**



A. SMITHSONIAN TEDDY BEAR. Plush, huggable and highly lovable, this fully-jointed reproduction even has the cocked head and frown of the 1903 original given by Theodore Roosevelt's grandson to the Smithsonian. **1.** Lg. 25" h.: 6860 \$45.00 (Members \$40.50) (s/h 3.45). **2.** Med. 15" h. (not shown): 6859 \$22.00 (Members \$19.80) (s/h 3.05).



B

B. BUNNY RABBIT PORCELAIN TEA SET. Set a charming table for those important afternoon tea parties. Teapot: 3" h. Made in West Germany. 6916 \$16.50 (Members \$14.85) (s/h 3.30).



D

C. LACE HANDKERCHIEF BONNET starts a tradition for the newborn boy or girl. Lace-edged square of pure Swiss batiste cotton folds in half, ties with satin ribbons into a baby bonnet. When the baby grows up and gets married, this same bonnet serves as a handkerchief for the bride. Approx. 12" sq. 2938 \$20.00 (Members \$18.00) (s/h 2.20).

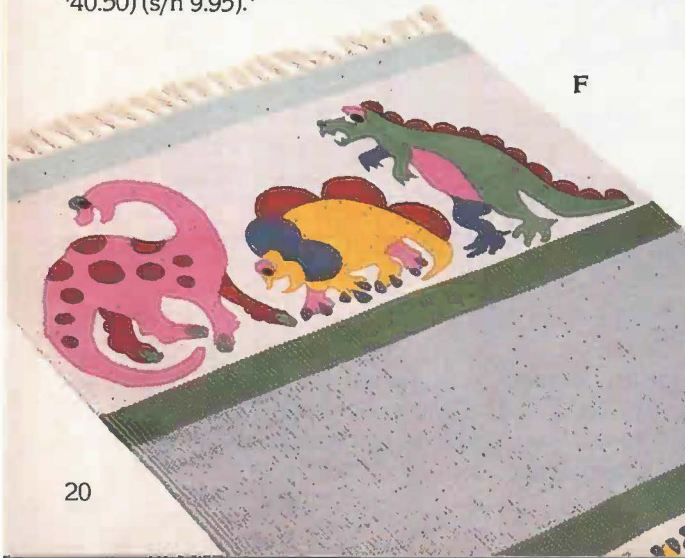
D. LACE BABY BOOTIES dress up baby's tiny feet in delicate finery. Lovingly handmade of pure cotton. Examples of handworked lace are in the National Museum of American History. Approx. 4 1/2" l. Imported. 2939 \$20.00 (Members \$18.00) (s/h 2.00).

E. CHILD'S WICKER ROCKER. Children should be seen in this Victorian-style wicker chair, faithfully crafted to reflect 1900's design at its best. 21" h. x 20" w. with 21" rockers. 3020 \$45.00 (Members \$40.50) (s/h 9.95).*



E

F. DINOSAUR RUG. Delightful dinos march across our hand-stenciled cotton rug. Our Dinosaur Hall is one of the most popular exhibits in the National Museum of Natural History. Imported. Approx. 2' x 3'. 2913 \$25.00 (Members \$22.50) (s/h 3.05).



F



H

G. MADLINE POP-UP BOOK. Make a visit to Madeline and the "girls in two straight lines." Based on the original by Ludwig Bemelmans, this delightful children's classic has bright three-dimensional illustrations. Hardback. 12 pgs. 1505 \$13.95 (Members \$12.55) (s/h 2.75).

H. MADLINE'S HAT. Your little girl will look as cute as Madeline in our sunny yellow hat. 100% wool felt with grosgrain ribbon. One size for ages 4-12. Made in U.S.A. 12 1/2" dia. 2906 \$40.00 (Members \$36.00) (s/h 2.50).

HAT AND BOOK:
9600 \$45.00 (Members \$40.50) (s/h 4.00).



I

I. DINO COMFORTER. Snuggle up with dinosaur friends on this colorful comforter. Comfortable machine care cotton/polyester blend, plumped with Kodel® fiberfill and lined in cloud soft brushed nylon. Made in U.S.A. Twin: 2910 \$37.50 (Members \$33.75) (s/h 4.20).* **MATCHING PILLOW SHAM** (not shown): 2911 \$12.50 (Members \$11.25) (s/h 2.00).*

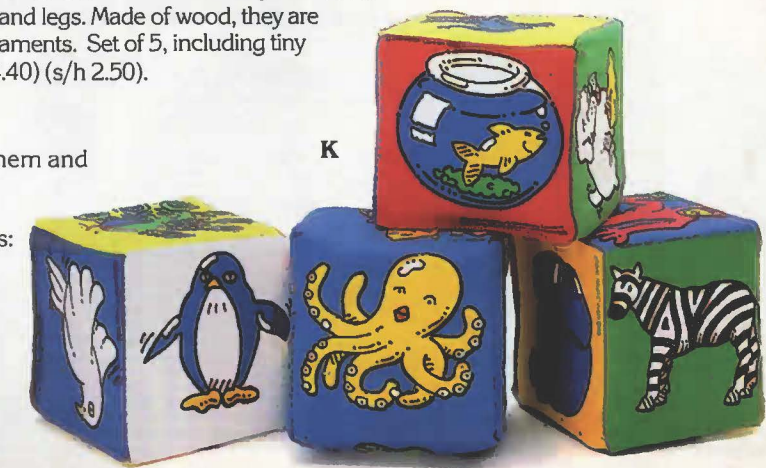
J. WIZARD OF OZ PUPPET ORNAMENTS. Dorothy, The Tin Man, The Cowardly Lion, and The Scarecrow have left Oz to come to your house! Pull the cord to move their arms and legs. Made of wood, they are charming toys as well as tree ornaments. Set of 5, including tiny book. 9009 \$16.00 (Members \$14.40) (s/h 2.50).



J

K. SOFT KNOCKABOUT BLOCKS. Turn them, toss them and squash them—our soft fabric blocks can safely take on tough toddlers! Set of four 4" sq. blocks: 6846 \$12.00 (Members \$10.80) (s/h 2.15).

K





A



B

A. IMARI PORCELAIN MUGS sparkle with accents of gold highlighting the richly-colored intricate pattern. Our exclusive porcelain mugs feature a design adapted from a fine example of Japanese ceramics, a 19th-century Imari plate in our National Museum of Natural History. 4" h. Set of 4: 7309 \$30.00 (Members \$27.00) (s/h 3.55). **FOR MATCHING PLATES, SEE PAGE 16.**



C

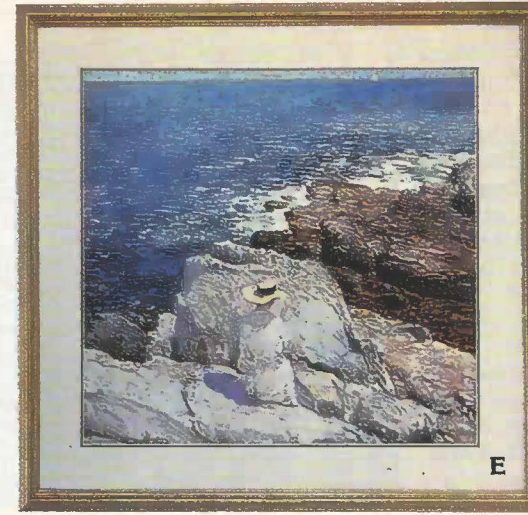
B. ACANTHUS LEAF SILK TIE. Our exclusive navy, taupe and burgundy silk tie features a sophisticated design of acanthus leaves, used in architecture on the capitals of Corinthian columns. This pattern is adapted from a William Morris design in our Cooper-Hewitt Museum in New York. Made in Italy. 2027 \$22.00 (Members \$19.80) (s/h 2.20).

C. STERLING SILVER SCROLL BRACELET. Gracefully embellished with flower and scroll motifs, our exclusive cuff bracelet looks like an antique heirloom. Our decorative bracelet is designed by American jeweler Ed Levin. Silver cuff bracelets are included in our Costume Division at the National Museum of American History. Approx. 1" w. 4615 \$75.00 (Members \$67.50) (s/h 2.05).

D. ROMANTIC CARDS. Our charming selection of nostalgic die-cut cards will add old fashioned charm to your special correspondence. Traditional cards similar to these are found in our National Museum of American History. Eight Victorian cards with envelopes, wrapped in a paper doily, tied with a ribbon, and boxed. 5335 \$16.00 (Members \$14.40) (s/h 2.70).



D



E

E. "THE SOUTH LEDGES, APPLIEDORE," by American impressionist Childe Hassam (1859-1935) is carefully reproduced from the original 1913 oil painting in our National Museum of American Art. Double matted under acrylic in a golden wood frame. 27" w. x 26" h. overall. 5574 \$110.00 (Members \$99.00) (s/h 13.85).*

NOTE CARDS (not shown). 15 cards and envelopes. 5" x 7". 5349 \$6.00 (Members \$5.40) (s/h 1.65).

F. STERLING SILVER AND GARNET NECKLACES. Smithsonian exclusive. Our stunning necklaces are designed especially for us by Poppy Dandiya in Jaipur, India. In a tradition of design that is centuries old, each bead is meticulously made by hand. Set: 4525 \$275.00 (Members \$247.50) (s/h 3.10). **1.** Approx. 30" l. 4523 \$150.00 (Members \$135.00) (s/h 2.45). **2.** Approx. 29" l. 4522 \$125.00 (Members \$112.50) (s/h 2.45).

G. SILVER, GARNET AND PEARL EARRINGS. A Smithsonian exclusive, our delicate drop earrings feature pearls and 6mm garnets set in shining sterling silver. Garnets are represented in our Gem and Mineral Hall at the National Museum of Natural History. Approx. 1" l. 4263 \$60.00 (Members \$54.00) (s/h 2.25).

H. CARPET BAG, exclusively ours, is as handsomely useful as those once carried by migrating opportunists after the Civil War. This striking handbag is made in Italy of Belgian carpet with leather handles and trim, brass feet and inside pocket. Approx. 7" h. x 14" l. x 5" w. 9925 \$95.00 (Members \$85.50) (s/h 3.20).*



2

1

F



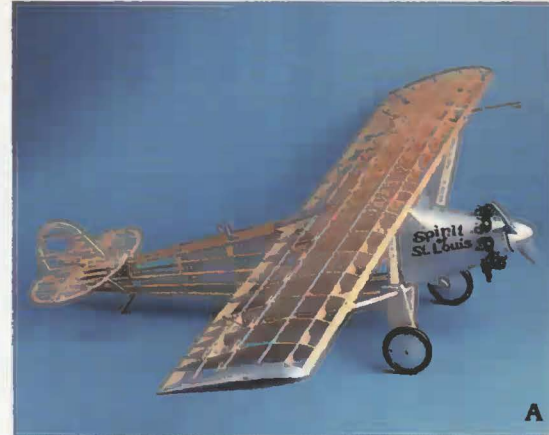
G



H

**CREDIT CARD
ORDERS PHONE
703-455-1700**

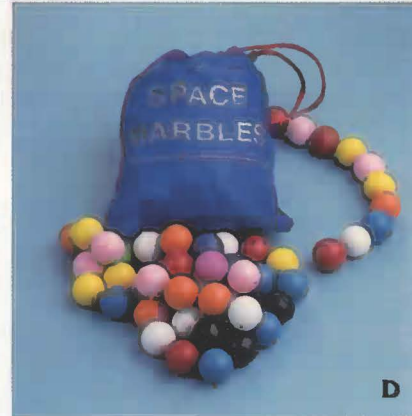
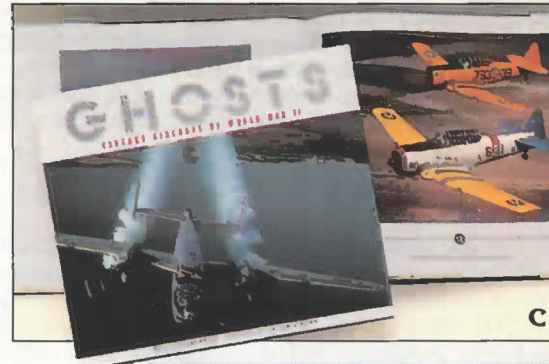
A. SPIRIT OF ST. LOUIS. Our authentic scale model balsa wood kit features plastic parts, wheels, decals and all the building materials needed for U/Control installation. Scale: $\frac{3}{4}$ " = 1'. Wing span: $34\frac{1}{2}$ ". 6358 \$21.00 (Members \$18.90) (s/h 3.00).*



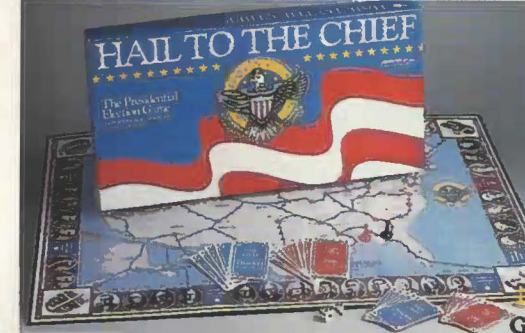
B. SPACESUIT lets youngsters share the adventure of space flight in their own blue nylon jumpsuit. Full body suit with torso and leg zippers; two pockets; flight, flag and shuttle patches; NASA insignia; knit wrist and neck cuffs; even velcro shoulder tabs to hold a backpack. Toddler small (2-3): 2952. Toddler large (4-5): 2953. Child small (5-7): 2954. Child medium (7-9): 2955. Child large (9-11): 2956. Each: \$38.00 (Members \$34.20) (s/h 1.95).



C. GHOSTS: VINTAGE AIRCRAFT OF WORLD WAR II by Philip Makanna. This unrivaled combination of photographs and first-hand accounts evokes the indomitable spirit of the pilots who served in WWII and the unforgettable planes they flew. Foreword by Chuck Yeager. Hardback. 120 pgs. 73 full color plates. 1614 \$36.00 (Members \$32.40) (s/h 3.45).



D. MAGNETIC SPACE MARBLES®. Just like the "toys in space" that went up in a 1985 Discovery Shuttle Mission, these marvelous marbles provide hours of fun and dozens of demonstrations of gravity (or lack of it), inertia, momentum, and other basic principles of physics. Fifty magnetic marbles in drawstring bag. 6202 \$9.75 (Members \$8.75) (s/h 1.95).



E. PARAFOLIO J-6 sports colorful air pockets that inflate with the wind. Simple and fun to fly, this frameless rip-stop nylon kite requires no assembly and folds into your pocket. Colors may vary. 6' sq. Imported. 6474 \$22.00 (Members \$19.80) (s/h 1.95). USE 50-LB. STRING: 6446 \$3.50 (Members \$3.15) (s/h .95).

F. "TO FLY." Our award-winning popular movie at the National Air and Space Museum takes you on a skyward voyage via various aircraft, including a gas balloon ascension and a rocket flight into space. (27 min.). VHS: 1819. BETA: 1820. Each \$29.95 (Members \$26.95) (s/h 2.00).

G. HAIL TO THE CHIEF. Show off how much you know of presidential history by answering questions while you race around the country to pick up the most electoral votes. Perfect for adults, children and future presidents. 6706 \$25.00 (Members \$22.50) (s/h 3.40).

H. AEROBIE. Gravity is defied, the aerobie soars and suddenly "catch" is a whole new game. This amazing flying ring is fun, easy to throw and catch and flies fast and far. In fact, the aerodynamically-designed aerobie holds the Guinness World Record for distance thrown for any heavier-than-air object! Flying plastic ring is 13" dia., gift-bound with informative paperback book. 6712 \$12.95 (Members \$11.65) (s/h 2.60).

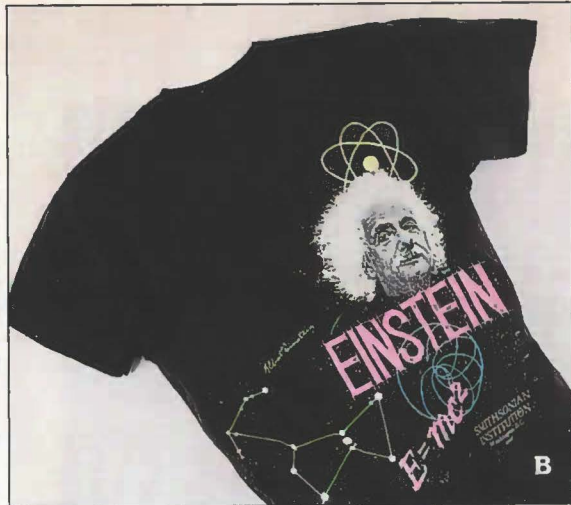
I. ORIGINAL PLASTIC SLINKY®. This quintessential coiled spring toy is made of safe plastic. Our set of three comes in glorious shades of orange, green and blue. 6205 \$6.00 (Members \$5.40) (s/h 1.95).



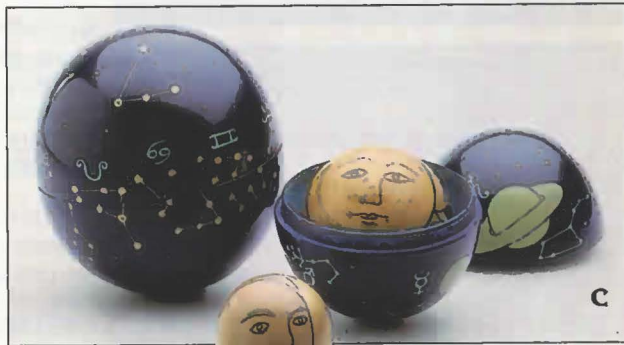
**CREDIT CARD
ORDERS PHONE
703-455-1700**



A. BLUE ANGELS FRAMED POSTER. The world's fastest flight team flies A-4 Skyhawks in a scene from "To Fly." Mounted in silver metallic frame under acrylic pane. 23 3/4" x 36 1/2". 5547 \$75.00 (Members \$67.50) (s/h 8.25).*



B. EINSTEIN T-SHIRT. Theoretically, Einstein admirers should especially relate to our scientific T-shirt! Machine washable 50% poly/50% cotton shirt is made in U.S.A. Adult sizes: Sm.: 2837. Med.: 2838. Lg.: 2839. X-Lg.: 2840. Each \$8.50 (Members \$7.65) (s/h 1.95).



C. NESTED CONSTELLATIONS. Handpainted wood celestial spheres feature "Father Sun," "The Man in the Moon," and two globes sprinkled with stars and constellations. Includes ring-shaped bases for display. 1 1/4" to 3" h. Set of 4: 6053 \$35.00 (Members \$31.50) (s/h 1.85).

D. SR-71 BLACKBIRD MODEL. Our sleek 1/100 scale plastic model of the world's fastest aircraft (2,193 mph) comes assembled with authentic markings. 13" l., 7" wingspan. Wood base. 8202 \$90.00 (Members \$81.00) (s/h 2.10).

E. "FUTURE FLIGHT" VIDEO. Using fantastic special effects, "Future Flight" predicts the next ten greatest flights to points on this planet and throughout the universe. Hosted by Christopher Reeve. 48 min. VHS: 1922. BETA: 1923. \$29.95 (Members \$26.95) (s/h 2.00).



D



E

**CREDIT CARD
ORDERS PHONE
703-455-1700**



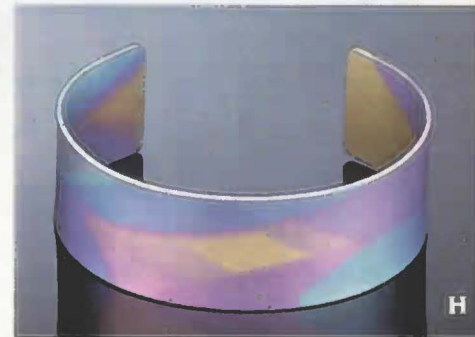
F

F. U.S.S. ENTERPRISE MODEL KIT. "Trekkies" will beam with delight over our model kit of the famous starship. Only 32 white plastic parts for easy assembly. Shown painted, kit includes decals, display stand and detailed instructions to assemble a 22" finished model. Paints and cement not included. The model of the starship "Enterprise" is on exhibit at the National Air and Space Museum. 6356 \$14.00 (Members \$12.60) (s/h 3.20).*



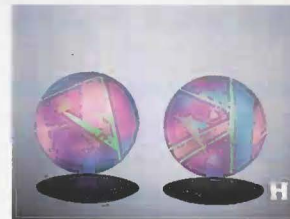
G

G. SMITHSONIAN STAR FINDER. Our 13" acrylic disk contains a silk-screened map of the major stars, constellations and the Milky Way. Overlay disk and time ring around its rim — line them up and see what will appear in the sky on any given night! 6032 \$32.00 (Members \$28.80) (s/h 2.65).



H

H. SPACE AGE JEWELRY. High tech jewelry of titanium or niobium by American craftsmen creates a sensation with kaleidoscopic coloration. The brilliant colors are caused by electrically charging the metal, forming an oxide layer which bends the light into colors. Both metals are strong, lightweight, durable and stress-resistant, ideal for use in jet engines as well as jewelry. Patterns will vary slightly. 1. IRIDESCENT NIOBIUM EARRINGS. Surgical steel posts, 1" dia. 4261 \$48.00 (Members \$43.20) (s/h 1.95). 2. RAINBOW TITANIUM BRACELET. 3/4" w. 4611 \$47.50 (Members \$42.75) (s/h 1.95).



H



I

I. LIQUID CRYSTAL CONSTELLATION MUG. Pour your morning coffee while the sun rises and watch the stars disappear! How? When you pour hot liquid into the ceramic mug, the liquid crystal components in the star image react to the heat, change color and form a new image—the signs of the planets. 3 3/4" h. 7391 \$12.00 (Members \$10.80) (s/h 1.95).



A

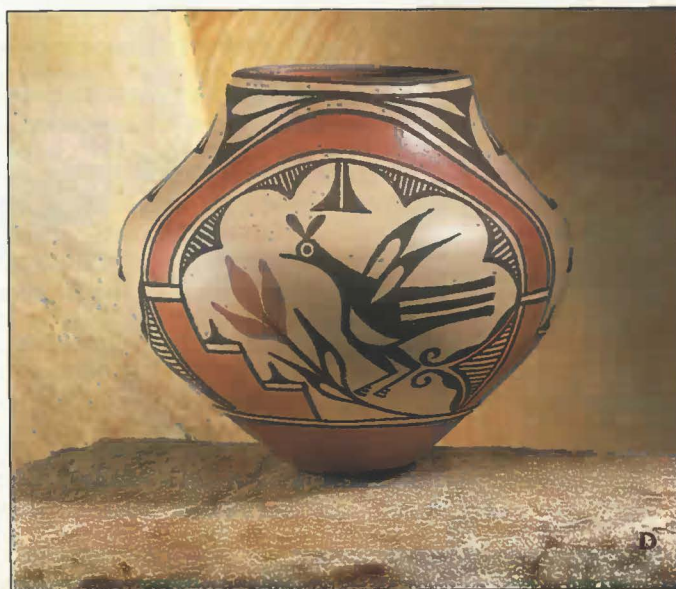


B

B. STERLING SILVER "CONCHO" EARRINGS. Shimmering sterling silver scalloped drop earrings are designed by Navajo Ray Tracey. Native American jewelry may be seen in our collections at the National Museum of Natural History. For pierced ears. 1 3/8" l. x 7/8" w. 4213 \$35.00 (Members \$31.50) (s/h 2.05).

C. WEEYOE PILLOWS. "Weeyoe" means beautiful in the Senecan language and is a good description for our pillows. The traditional designs are adapted from an American Indian woven straw bag, pouch and basket in our collection. Cotton duck. Made in U.S.A. Graduated sizes: 18", 15" and 13" sq. Set of 3. 2900 \$48.00 (Members \$43.20) (s/h 3.70).*

D. ZIA POT. The "Zia" bird, a spiritual symbol for the Zia Pueblo, forms the traditional motif on our prized collector's clay pot. Each pot is hand-made, fired outdoors in the traditional manner and decorated and signed by Lois Medina of Zia, New Mexico. This Smithsonian edition is limited to 150 pots. Size and design will vary. Approx. 6 1/4" h. 7369 \$175.00 (Members \$157.50) (s/h 4.10).



D

A. SQUASH BLOSSOM NECKLACE. Exclusive to the Smithsonian, this beautiful needlepoint necklace is finely crafted by Zuni Indians and set in sterling silver. Intricate detail of the hand-shaped stones represents the traditional symbol of the squash blossom. Similar squash blossom necklaces are in the collections of the National Museum of Natural History. Approx. 24" l. 4555 \$495.00 (Members \$445.50) (s/h 2.20).

E. ISLETA TURQUOISE RING. A Smithsonian exclusive, our handsome sterling silver and turquoise ring is skillfully handcrafted by Native Americans. The striking design by Kathy Abeita of the Isleta Pueblo features a large curved stone from the Kingman Mine surrounded by a twisted silver bezel and a wide band. Size 5: 4992. Size 6: 4993. Size 7: 4994. Size 8: 4995. Size 9: 4996. Size 10: 4997. Size 11: 4998. Size 12: 4999. \$165.00 (Members \$148.50) (s/h 2.65).



E



F

F. STERLING SILVER FEATHER PIN/PENDANT. The feather is recognized as a gift from the Great Spirit by American Indian cultures. Exclusively ours, this beautiful feather pin or pendant is designed by Navajo Indian Ray Tracey and is made of shimmering sterling silver. 2 1/4" l. 4090 \$25.00 (Members \$22.50) (s/h 2.05).

G. "LOST AND FOUND TRADITIONS: NATIVE AMERICAN ART 1965-1985." Crafts from over 100 tribal groups are shown; nearly 400 objects are pictured and discussed, including jewelry, pottery, textiles, carvings and rugs. This publication celebrates the exhibition at our Renwick Gallery—"Lost and Found Traditions: Native American Art 1965-1985," through March 6, 1988. Hardback. 288 pgs. 403 illus., 48 in color. 1616 \$35.00 (Members \$31.50) (s/h 3.45).



G

H. CAPTIVATING STORYTELLER. Two time-honored Native American traditions, telling stories and working with clay, are combined in our charming Storyteller. Created by Isleta Pueblo potter Stella Teller, this natural clay handmade figure is fired in the traditional method and features the grey pigment, flared skirt and turquoise adornment characteristic of her style. Stella Teller's work is included in our Renwick Gallery exhibition, "Lost and Found Traditions." Signed. Approx. 3 1/4" h. 8082 \$350.00 (Members \$315.00) (s/h 3.05).

**CREDIT CARD
ORDERS PHONE
703-455-1700**

"A lot of people who buy my figures seem to make an association between the Storyteller and themselves. When doing the faces of my figures, I never put a nose on them, because that gives them too much character. Grandmother is thinking about the story she's telling; that's why her eyes are closed."

Stella Teller
Isleta



H

A. LAVENDER JADE RING illustrates that jade is not always green. Our elegant cabochon gemstone is truly magnificent in a four-prong setting of 14k gold. In China, jade was considered the most precious of stones, "a mineral forged from the rainbow to make thunderbolts for the Storm God." See our collections of jade in our National Museum of Natural History. Size 5: 4480. Size 6: 4481. Size 7: 4482. Size 8: 4483. Each \$495.00 (Members \$445.50) (s/h 3.60).

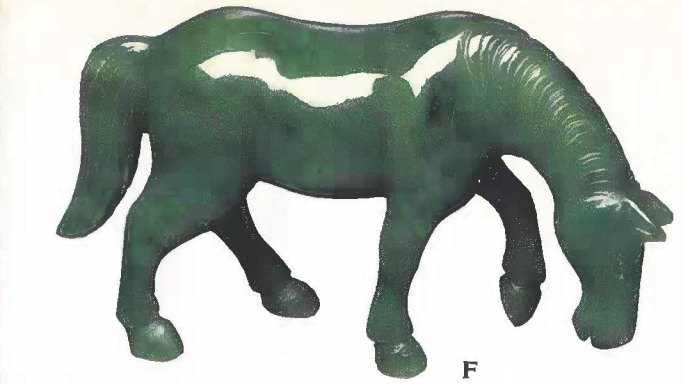
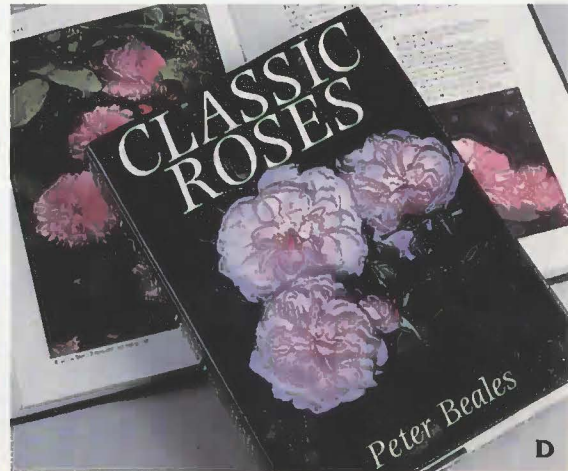


B. WISTERIA LACE SCARF. Made expressly for us of imported silk satin, our richly detailed scarf is adapted from an original 19th-century Belgian "needlelace" shawl in the National Museum of American History. 32" sq. Dusty Rose. 2149 \$36.00 (Members \$32.40) (s/h 2.20).



C. "PUCK" GARDEN SCULPTURE. The Smithsonian's Division of Horticulture includes in its collection a model of this charming little garden statue, which is in the style of 19th-century allegorical statues. "Puck" was the mischievous little sprite known for his pranks in Shakespeare's "A Midsummer Night's Dream." A Smithsonian exclusive. 18" high, cast in concrete, approx. 28 pounds. 8303 \$75.00 (Members \$67.50) (s/h 10.35).*

D. CLASSIC ROSES. Lavishly, in 540 color photos, Peter Beales identifies and describes every rose from the legendary Damask of the Babylonian Gardens to the humble, hardy Rugosa Hedge Rose and offers advice on how to grow your favorite varieties. Hardback. 432 pgs. 1152 \$45.00 (Members \$40.50) (s/h 3.75).



E. STERLING ROSE PAPERWEIGHT. The romance of the rose never fades, although this flower has been in existence for over 3000 years. The pristine beauty of a Sterling Rose has been captured with lifelike detail by American artist Daniel Salazar. This hand blown glass paperweight is representative of art glass paperweights in the collections of our National Museum of American History. Signed and dated. Approx. 2" dia., 2" h. 7609 \$210.00 (Members \$189.00) (s/h 3.20).

F. CARVED JADE HORSE. Our splendid steed gleams with the rich luster of jade. Hand carved in the Orient, our treasured statue is a copy of a bronze ornamental sculpture at the National Museum of Natural History. A Smithsonian exclusive, it is a precious find for collectors. Approx. 3 1/4" l. x 2" h. 8065 \$65.00 (Members \$58.50) (s/h 2.50).

G. ROSE QUARTZ CLOISSONNE NECKLACE AND EARRINGS. The soft pink hue of rose quartz, set off by the beauty of cloisonné beads, makes our necklace especially elegant. Approx. 29" l. 1. Necklace: 4589 \$150.00 (Members \$135.00) (s/h 2.45). 2. Matching Earrings: For pierced ears. 4252 \$18.00 (Members \$16.20) (s/h 2.05). 3. Set: 4574 \$168.00 (Members \$151.20) (s/h 2.45).

H. PETIT POINT SEWING KIT. The petit point top and embossed sides on our tiny metal sewing case conceal a thimble, thread, needle and pins. Perfect for purse or travel. Similar needle cases are in the thimble collection in the National Museum of American History. 1 1/2" l. 2626 \$16.00 (Members \$14.40) (s/h 2.05).



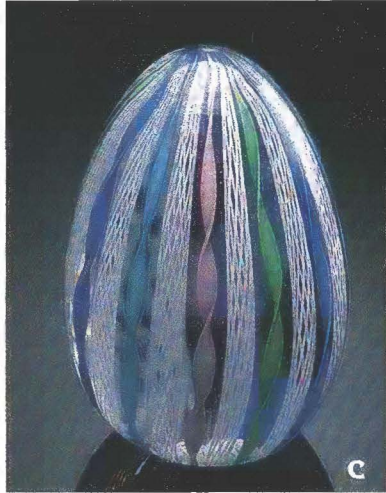
A. AMETHYST LEAF EARRINGS feature an 8mm amethyst bead on a removable carved leaf jacket. Leaf 7/8"l. For pierced ears. 4253 \$20.00 (Members \$18.00)(s/h 2.05).



B. AMETHYST AND ROSE QUARTZ NECKLACE. A breath of spring, our long light strand of pale rose quartz and soft lavender amethyst is set off by gleaming silver beads. Handmade in India. Similar stones are found in our Gem and Mineral Hall. Approx. 31"l. 4806 \$60.00 (Members \$54.00) (s/h 2.15).

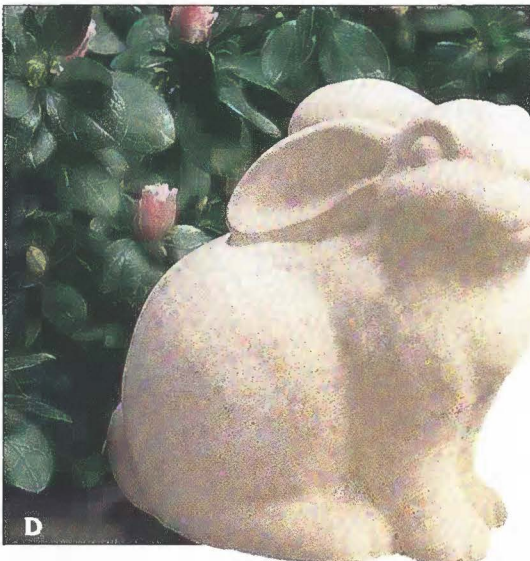


C. GLASS EGG PAPERWEIGHT. Masterfully blown of Murano glass, our egg is swirled with soft pastels for breathtakingly beautiful effects. Murano hand blown glass may be seen in our Division of Glass and Ceramics 2 3/4" h. 7642 \$25.00 (Members \$22.50) (s/h 1.95).



D. GARDEN RABBIT. Plant a smile in your garden with our whimsical rabbit! Cast from an original sculpture by George Carruth, this carefree bunny is made of durable cement that acquires a natural aged patina the longer he lives outdoors. Approx. 7" h., 9 lbs. 8015 \$35.00 (Members \$31.50) (s/h 6.15).

**CREDIT CARD
ORDERS PHONE
703-455-1700**



**Smithsonian Institution
Department 0006
Washington, D.C. 20073-0006**



Postmaster, if not forwardable, deliver to current resident.

XXXXXXXXXXCAR-RT SORT**CR41
K 115
REV TORKOM MANDOGIAN
630 2ND AV
NEW YORK NY 10016

Nonprofit
Organization
Bulk Rate
U.S. POSTAGE
PAID
Smithsonian
Institution