

Constant temperature and humidity of the room, with slight seasonal changes.

Air conditioning on 24 hours.

Closed sealed cases (buffer fluctuation in the environment).

Construction material - certain woods react with metals.

Metals and textiles are best displayed separately.

Know what the cases are made of.

What kind of adhesives to be used.

What kind of wood, paint, etc.

If they are not made of chemically (stolde)? materials, fumes will build up inside the cases (if closed) and ..... with your displayed objects.

Lighting important factor

Best if lighting comes from outside the cases (tracks can be installed on the ceiling, etc.)

Any florescent lights should have ultra violet filters on them. Florescent lights are good because they are cool.

Incandescent lights can be used if they are "cool-beam".

Incandescent lights have the advantage of having no ultra violet radiation.

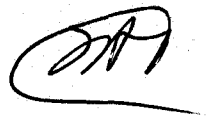
Consult with lighting companies.

If you decide on closed cases, it would be important to make allowances for insertion of silica gel to control humidity. A drawer under the floor of the cases will be one way to do this.

Mannequins

aug. 7/84

7/18/83  
Your Grace:  
Per your request I am  
submitting the attached  
which has been sent to  
Me by Nora.



Dear Mrs. Ordjanian.

Hopefully, this packet will actually get to you!

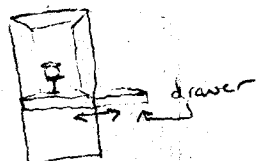
Enclosed are some names of companies which make cases. You might call and see if one, or several companies, would be willing to send someone to the Church and advise you about cost and design.

The best way would be for the room itself to be maintained at a constant temperature and humidity, with slight seasonal changes. This would mean keeping air-conditioning, etc. on 24 hrs. If this is an impossible expense, I would consider closed, sealed cases which would buffer fluctuations in the environment of the room. Be aware that when choosing construction materials for your cases, that certain woods will react with metals, that metals and textiles are best displayed separately, etc. (I will advise you in detail on this.) The point is that you should know exactly what the cases are made of - what kind of adhesives will be used, what kind of paint, wood, and so forth. If they are not made of chemically stable materials, fumes will build up inside the cases (if closed), and react with your displayed objects.

Lighting is another important factor. It is best if all the lighting comes from outside the cases (tracks can be installed on the ceiling, for example). Any fluorescent lights should have ultraviolet filters on them. Fluorescent lights are good when filtered because they are cool. Incandescent lights can be used if they are "cool-beam". Incandescent lights have the advantage of having no ultraviolet radiation. Again, I would consult with the lighting companies.

There are also special considerations for mounting different materials, especially textiles. Once the objects are chosen for display, we can discuss this.

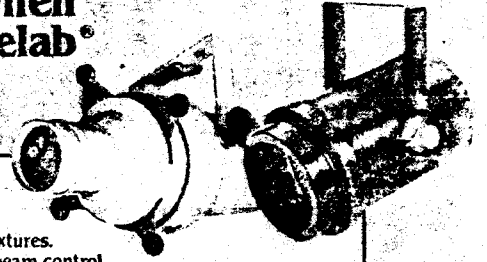
One other thing - if you decide on closed cases, it would be important to make allowances for the insertion of silica gel, to control humidity. A drawer under the floor of the cases would be one way to do this.



Please feel free to call me anytime.

Sincerely,  
Linda S

## You're in control when you select Litelab® low-voltage fixtures.



**Job-effective lighting**  
made possible with LPB  
series low-voltage PAR fixtures.

- provide maximum beam control
- excellent color rendition
- virtually eliminate hazardous infrared & ultraviolet rays.

**Cost-effective lighting**  
the result of energy-saving design.

- require less electrical current to operate
- provide more lumens per watt
- generate less heat than existing line-voltage systems.

**Ease of installation**  
Litelab stocks an extensive line of fittings that can be readily  
adapted to existing track systems.

A wide selection of in-stock fixtures are available for prompt  
delivery and can be easily modified to meet your specialized  
lighting requirements.

**Hassle-free Maintenance**  
Angle-locking devices are available, relieving the designer  
of the burden of re-focusing fixtures disturbed during  
lamping and daily maintenance.

Low-voltage fixtures have long lamp life,  
resulting in less downtime, less cost.

**Litelab**

**Problems ... Questions ...**

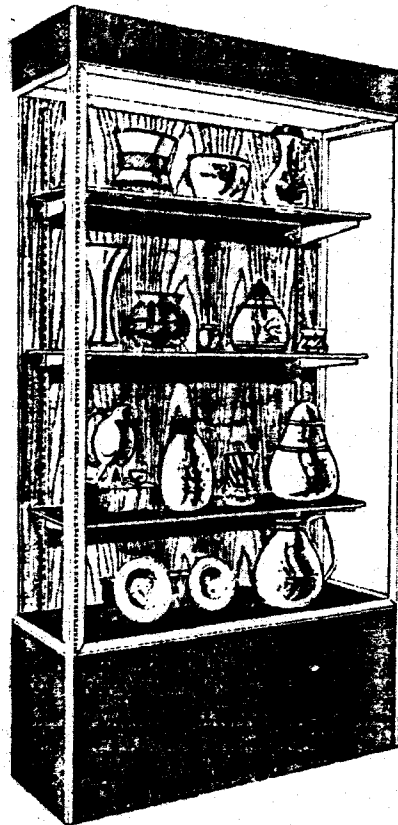
**Special Considerations?**

Call our staff of fixture and control designers for solutions to your special needs.  
NEW YORK 212/675-4357. BUFFALO 716/856-4300. LOS ANGELES 213/936-6206.

Reader Service Card #11

FEBRUARY 1983

# GREAT WORKS GET TOGETHER

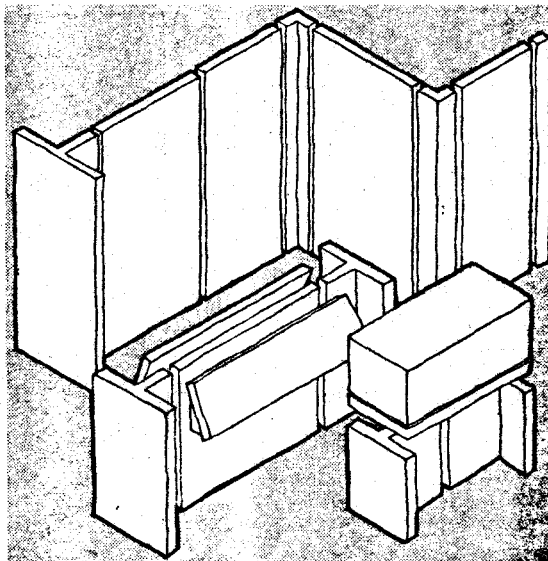


Great works of all ages are in your care. You want them to have the protection and environment that will let them be enjoyed for years to come. The Highlight by Oro has a large, dust free viewing area, and maximum security is assured by three locks. All glass is tempered for safety. The glass front panel opens on a full length piano hinge. Optional light box floods interior with bright diffused light. Shipped ready to use. Put your great works in the protection of our great work. For further information write...

# ORO

MANUFACTURING CO  
P.O. Box 479-A/MONROE, N.C. 28110  
TELEPHONE (704) 283-2186

# Now you can rearrange a showplace as easily as you rearrange a show.



U.S. Patent Pending

These dividers and pedestals form a modular exhibit system that's completely reusable. Which means you don't have to build new structures each time you have a new show.

The units can be arranged in many different ways, to solve almost any exhibit problem. They never overpower the objects being exhibited. They're sturdy, lightweight, repaintable and easy to store. And, because they're so affordable, you can add units as you need them.

The Vincent Ciulla Design Exhibit System is already being used successfully by the Historical Society of Pennsylvania in Philadelphia. If you'd like more information on how it could work for you, contact Vincent Ciulla Design Associates:

You'll be making a constructive change in the way you mount exhibitions.

Without a lot of construction.

**VINCENT CIULLA DESIGN ASSOCIATES, INC.**

66 Greene Street New York, NY 10012 (212) 431-4255

© VINCENT CIULLA DESIGN ASSOCIATES, INC.

Reader Service Card #101



## For your museum only: Design management with panache!

A successful exhibit is the outcome of many professional concerns—research, interpretation, and design. Lynch Museum Services has developed a comprehensive method to address these issues, which are uniquely related to museum exhibits. The expertise of curators, educators and designers are all coordinated by a managerial process, specifically developed for this purpose. The result? Exhibits with panache.

Morris Arboretum of the University of Pennsylvania, Philadelphia, PA  
Penn's Woods Revisited

Recipient of the Lindley Prize, Silver Gilt Medal at the  
Chelsea Flower Show, London, England

## LYNCH MUSEUM SERVICES

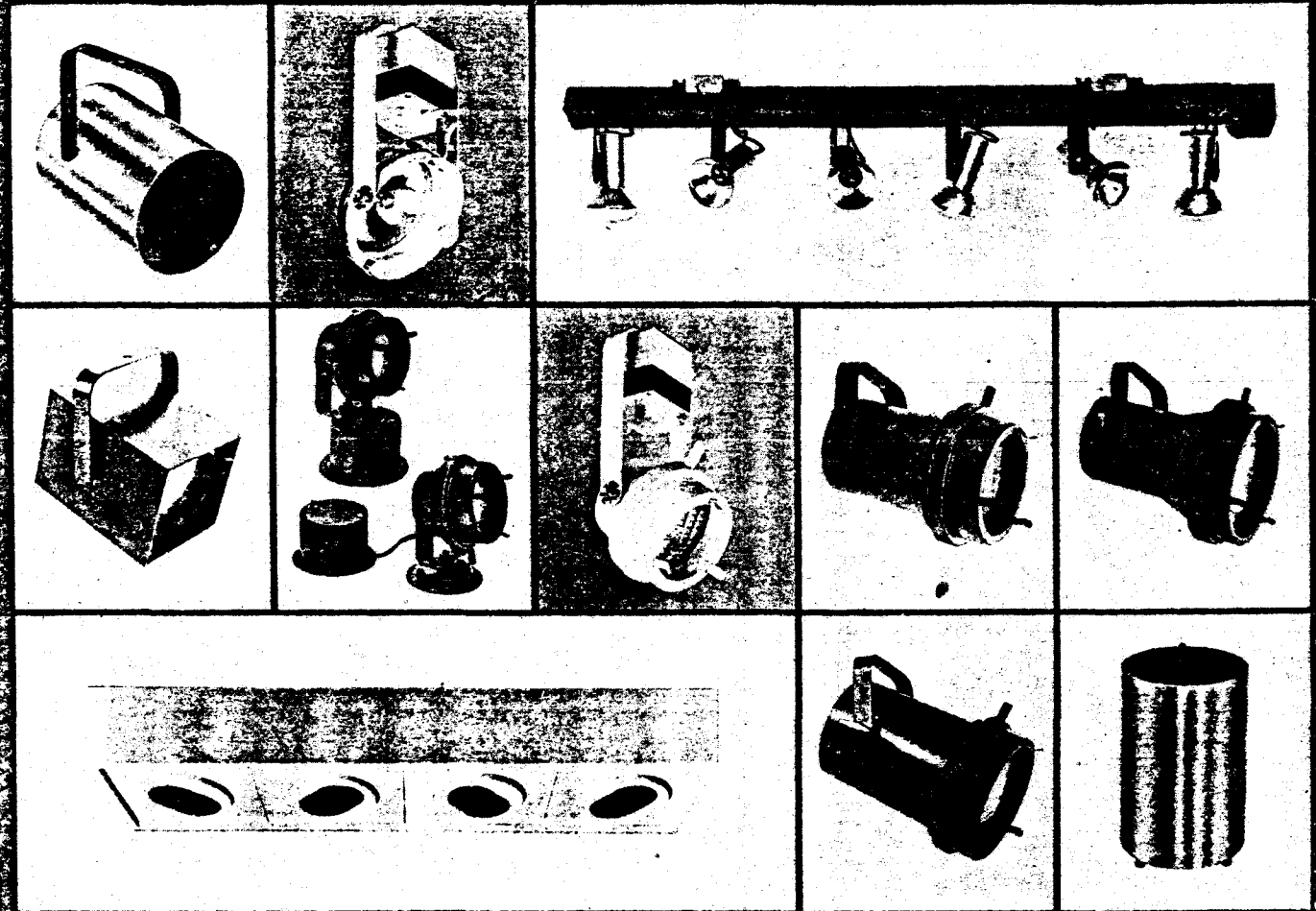
A Division of Lynch Industries, Inc.

1601 Sherman Avenue, Perinsauken, N.J. 08110  
609-663-8555

Consultation; Exhibit Planning;  
Design; Research;  
Scripting; Copy Writing;  
Engineering of Participatory Exhibits;  
Fabrication; On-site Installation

Reader Service Card #55

# Low Voltage Lighting...



- ... Reduce Energy Cost
- ... Reduce Heat Load
- ... Distinct Beam Spreads and Color Rendition
- ... High Efficiency Continuous Spectrum Incandescent

25 years of manufacturing experience now provides you with the highest technology and performance in low voltage accent and display lighting.

Features integral dimming, fusing and safety interlocks, and a variety of mounting devices, color filters and accessories.

Excellent for MUSEUMS, ART GALLERIES, SHOWROOMS, DEPARTMENT STORES, MALLS, RESTAURANTS, PUBLIC SPACES, AND RESIDENCES.



Lighting Services Inc.  
150 East 58 Street  
New York, NY 10155

212/838-8633